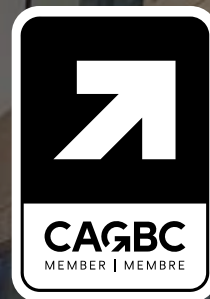




catalogues
& more



entrance matting

 **edgewood**
uniquely better



our design studio



has all you need for selecting and specifying products

Compare product specifications, access revit content, create/download submittals & more



Edgewood is a Canadian full-service wholesaler of matting and athletic flooring
Businesses look to us for premium products coupled with strategic execution

heavy traffic

Purcell™	5
Everest™	6
Supreme Knob™	7
Inlay Logo Matting	8
Tundra™	9
Debris Trap™ Mesh	10
Gritstop Fingermat™	10

medium traffic

Rainier™	12
Premium Knob™	13
Premium Rib	14
Chaparral™ Tile	14
Scraper Mat	15

light traffic

Style-Point™	17
Herringbone	18
Harbour Point	19
Twin Rib	20
Poly-Tuft™	21



We are a Canada Green Building Council member and can assist with projects seeking green certification



discover the right matting solutions for your space with our

matting placement guide



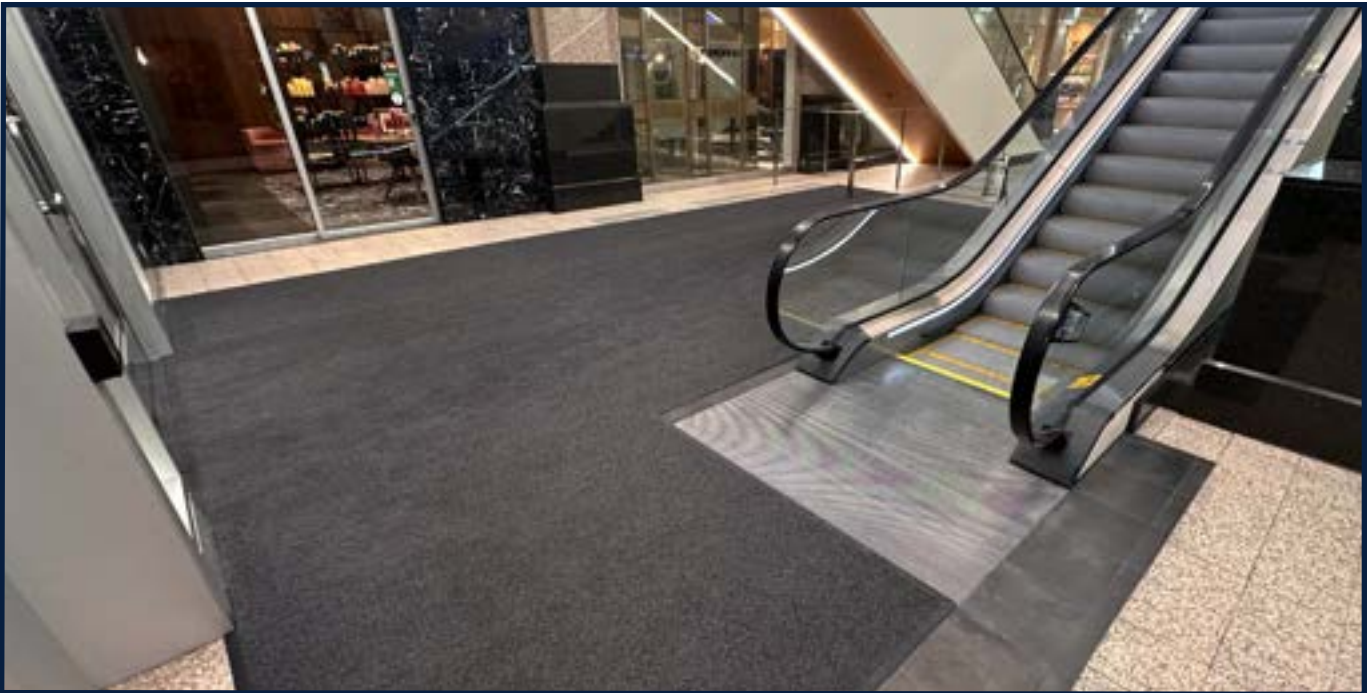
edgewoodgroup.ca/mat-placement-chart

matting is about soil control
Most soil in a building is tracked through doors

Good matting systems
can trap **80%**
of tracked soil

heavy traffic

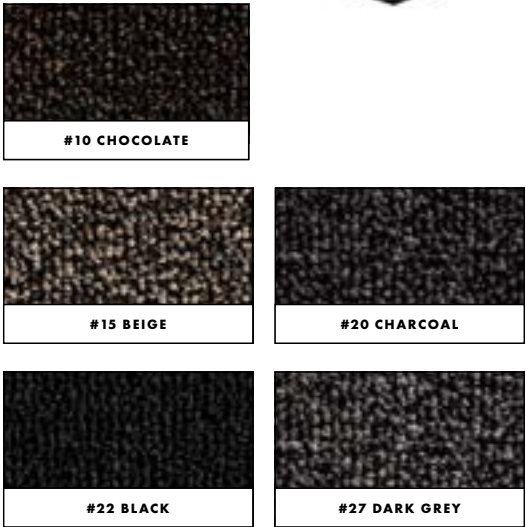
For entryways that see 400,000 –1 million users per year
Recommended for hospitals, shopping centres, schools,
office towers and civic buildings



THE ULTIMATE PERFORMANCE WITH
THE LOOK OF QUIET SOPHISTICATION

- APPLICATION
- Indoor
 - Heavy traffic
 - Ramp edges, logos, seaming and borders available
- COMPOSITION
- Permanently anti-static
 - Enhanced UV stability
 - Mold and mildew resistant
 - Ice melt, salt, chlorine and petroleum resistant

construction	Tufted loop pile
face style	Tufted
face material	Polyamide (PA6)
face weight	1,000 g/sq. m (29 oz/sq. yd)
backing	PVC
edging	Available
flammability	Cfl, s1 EN 13501-1
thickness	5/16" (7.2 mm)
total weight	2.97 kg/sq. yd (0.73 lb/sq. ft)
warranty	4 year



size	part code
3'4" (1 m) Roll/cut	PRLCC1000
6.5' (2 m) Roll/cut	PRLCC2000
*Roll lengths 82.0' (25 m) +/- (Custom sizes & rolls available) CC = Colour number	



Everest™



COMMERCIAL CARPET AESTHETIC IN AN EASY TO CLEAN HIGH TRAFFIC ENTRANCE MATTING

- APPLICATION
- Indoor/outdoor

Heavy traffic

Spike and skate resistant

Ramp edges, logos, seaming and borders available

- COMPOSITION
- Permanently anti-static

Enhanced UV stability

Mold and mildew resistant

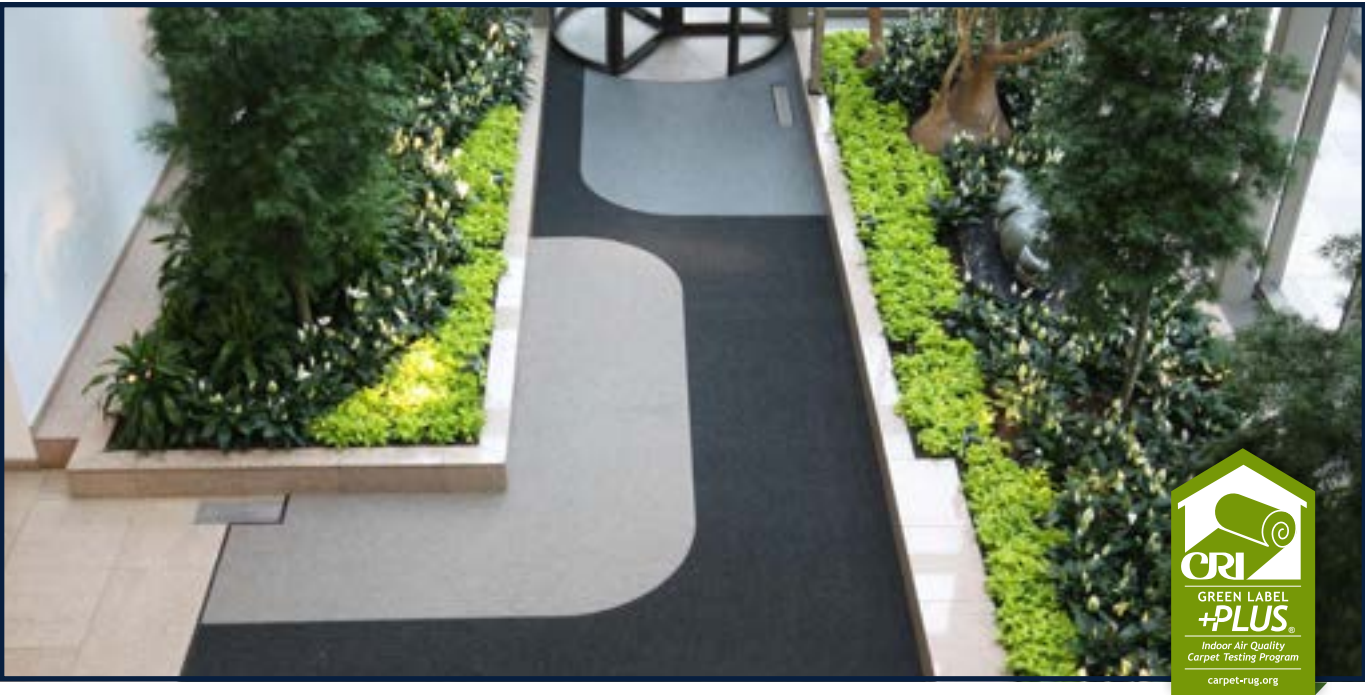
Dimensionally stable backing

Ice melt, salt, chlorine and petroleum resistant

construction	Needlepunch loop pile
face style	Omni punch patterned needle felt
face material	Solution dyed UV stabilized ASOTA® polypropylene fibres
face weight	1,700 g/sq. m (50 oz/sq. yd)
backing	EM natural-synthetic composite rubber
edging	Available
flammability	Passes C.G.S.B. Standards for Flammability (Pill Test) Meets Flammability Standard DOC-FF-1-70 (Pill Test)
thickness	½" (12.5 mm)
total weight	2.82 kg/sq. yd (0.58 lb/sq. ft)
warranty	5 year
recycled content: 5%	



size	part code
3.25' (1 m) Roll/cut	EVRCC1000
6.5' (2 m) Roll/cut	EVRCC2000
13' (4 m) Roll/cut	EVRCC4000
*Roll lengths 75.5' (23 m) +/- (Custom sizes & rolls available) CC = Colour number	



Supreme Knob™



ULTIMATE PERFORMANCE WITH WEAR RESISTANT TEXTURE, FOR A LONG-LASTING APPEARANCE

- APPLICATION
- Indoor/outdoor

Heavy traffic

Spike and skate resistant

Holds ~7 L (1.85 gal) of water per sq. yd

Ramp edges, logos, seaming and borders available

- COMPOSITION
- Permanently anti-static

Enhanced UV stability

Mold and mildew resistant

Dimensionally stable backing

Ice melt, salt, chlorine and petroleum resistant

construction	Needlepunch loop pile
face style	Berber (hobnail)
face material	Solution dyed UV stabilized ASOTA® polypropylene fibres
face weight	1,790 g/sq. m (53 oz/sq. yd)
backing	EM natural-synthetic composite rubber
edging	Available
flammability	Passes C.G.S.B. Standards for Flammability (Pill Test) Meets Flammability Standard DOC-FF-1-70 (Pill Test)
thickness	7/16" (11 mm)
total weight	2.91 kg/sq. m (0.60 lb/sq. ft)
warranty	3 year
recycled content: 5%	



size	part code
3.25' (1 m) Roll*/cut	SKNCC1000
6.5' (2 m) Roll*/cut	SKNCC2000
13' (4 m) Roll*/cut	SKNCC4000
*Roll lengths 75.5' (23 m) +/- (Custom sizes & rolls available) CC = Colour number	

logos that last

GIVE A GREAT FIRST IMPRESSION AND BOOST BRAND VISIBILITY

Inlay logos are made by precision cutting different coloured mats, giving you **a high-clarity logo that never wears off**

Inlay logos in:

- Purcell™
 - Everest™
 - Supreme Knob™
- Premium Knob™
 - Rainier™
 - Tundra™

SUPREME KNOB™ LOGO COLOURS



FINE LINE COLOURS



Tundra™



AGGRESSIVE EXTERIOR MAT WITH FLOW-THROUGH BACKING TO PROMOTE DRAINAGE

APPLICATION	Outdoor
	Heavy traffic
	Low rolling resistance for wheelchairs
	Ramp edges, logos, seaming and borders available
COMPOSITION	Permanently anti-static
	Enhanced UV stability
	Mold and mildew resistant
	Dimensionally stable backing
	Ice melt, salt, chlorine and petroleum resistant



construction	Tufted cut pile
face style	Tufted grass
face material	Polypropylene
face weight	1,100 g/m ² (32 oz/yd ²)
backing	Latex
edging	Available
flammability	Efl, EN 13501-1
thickness	½" (12.5 mm)
total weight	2.32 kg/m ² (0.48 lb/ft ²)
warranty	3 year

size	part code
3.25' (1 m) Roll*/cut	TRFCC1000
6.5' (2 m) Roll*/cut	TRFCC2000
*Roll lengths 65.5' (20 m) +/-	
CC = Colour number	

Debris Trap™ Mesh

VINYL LOOPED SCRAPER MAT WITH FLOW-THROUGH BACKING

APPLICATION	Indoor/outdoor
	Heavy traffic
COMPOSITION	Ramp edges available
	Flow-through design
	Chemical-resistant material

construction	Vinyl loop
backing	Unbacked
edging	Available
thickness	9/16" +/- 1/16" (14 +/- 2 mm)
total weight	4.67 kg/sq. m (0.96 lb/sq. ft)
warranty	2 years



size	part code
4' (1.2 m) roll */cut	DTMCC0400
* Roll lengths 40' (12.2 m) +/-, CC = Colour number	

Gritstop Fingermat™



SCRAPES AND CONTAINS MESS IN HIGH SOIL AREAS

APPLICATION	Outdoor
	Medium to heavy traffic
COMPOSITION	Integrated ramp edges
	UV and ozone resistant
	Good flexibility in low temperatures

construction	Rubber
face style	Scraper fingers
thickness	9/16" (14.5 mm)
total weight	9.52 kg/sq. m (1.95 lb/sq. ft)
warranty	5 year
recycled content: 30%	



size	part code
24" x 32" (0.6 m x 0.8 m)	GFM222432
32" x 39" (0.8 m x 1.0 m)	GFM223239
36" x 60" (0.9 m x 1.5 m)	GFM223660
36" x 72" (0.9 m x 1.8 m)	GFM223672

matting is about soil control

5 steps on a mat cleans most soil from footwear

Good matting systems
need at least **15'** (4.7m)
to be effective

medium
traffic

For entryways that see 100,000 – 400,000 users per year
Recommended for health clinics, boutique shopping
centres, hotels, and small office buildings



Rainier™



CARPET AESTHETIC IN A DURABLE, EASY TO CLEAN MAT

- APPLICATION
- Indoor/outdoor
 - Medium traffic
 - Holds ~5.5 L (1.45 gal) of water per sq. yd
 - Ramp edges, logos, seaming and borders available

- COMPOSITION
- Permanently anti-static
 - Enhanced UV stability
 - Mold and mildew resistant
 - Dimensionally stable backing
 - Ice melt, salt, chlorine and petroleum resistant

construction	Omni punch patterned needle felt
face style	Omni pattern
face material	Solution dyed UV stabilized ASOTA® polypropylene fibres
face weight	1150 g/sq. m (34 oz/sq. yd)
backing	EM natural-synthetic composite rubber
edging	Available
flammability	Passes C.G.S.B. Standards for Flammability (Pill Test) Meets Flammability Standard DOC-FF-1-70 (Pill Test)
thickness	3/8" (9.5 mm)
total weight	2.15 kg/sq. m (0.44 lb/sq. ft)
warranty	3 year
recycled content: 5%	



size	part code
3.25' (1 m) Roll/cut	RNRCC1000
6.5' (2 m) Roll/cut	RNRCC2000
13' (4 m) Roll/cut	RNRCC4000
*Roll lengths 82' (25 m) +/- (Custom sizes & rolls available) CC = Colour number	



Premium Knob™

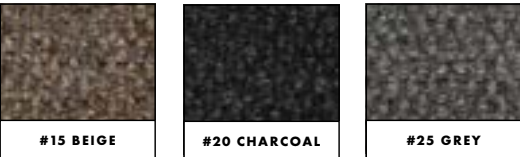


ROBUST DESIGN FOR MULTIDIRECTIONAL PROTECTION

- APPLICATION
- Indoor/outdoor
 - Medium - heavy traffic
 - Holds ~5.5 L (1.45 gal) of water per sq. yd
 - Ramp edges, logos, seaming and borders available

- COMPOSITION
- Permanently anti-static
 - Enhanced UV stability
 - Mold and mildew resistant
 - Dimensionally stable backing
 - Ice melt, salt, chlorine and petroleum resistant

construction	Needlepunch
face style	Berber (hobnail)
face material	Solution dyed UV stabilized ASOTA® polypropylene fibres
face weight	1150 g/sq. m (34 oz/sq. yd)
backing	EM natural-synthetic composite rubber
edging	Available
flammability	Passes C.G.S.B. Standards for Flammability (Pill Test) Meets Flammability Standard DOC-FF-1-70 (Pill Test)
thickness	3/8" (9.2 mm)
total weight	2.19 kg/sq. m (0.44 lb/sq. ft)
warranty	3 year
recycled content: 5%	



size	part code
3.25' (1 m) Roll*/cut	PKNCC1000
6.5' (2 m) Roll*/cut	PKNCC2000
13' (4 m) Roll*/cut	PKNCC4000
*Roll length 69' (21 m) +/- (Custom sizes available) CC = Colour number	

Premium Rib

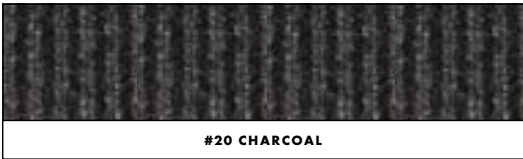


ROBUST EFFECTIVENESS IN ANY DIRECTION

APPLICATION	Indoor/outdoor
	Holds ~5.5 L (1.45 gal) of water per sq. yd
	Ramp edges, logos and seaming available
COMPOSITION	Permanently anti-static
	Enhanced UV stability
	Mold and mildew resistant
	Dimensionally stable backing
	Ice melt, salt, chlorine and petroleum resistant



construction	Needlepunch
face style	Linear rib
face material	Solution dyed UV stabilized ASOTA® polypropylene fibres
face weight	1150 g/sq. m (34 oz/sq. yd)
backing	EM natural-synthetic composite rubber,
edging	Available
flammability	Passes C.G.S.B. Standards for Flammability (Pill Test) Meets Flammability Standard DOC-FF-1-70 (Pill Test)
thickness	7/16" (11 mm)
total weight	2.16 kg/sq. m (0.44 lb/sq. ft)
warranty	3 year
recycled content: 5%	



size	part code
3' (1 m) Roll*/cut	PRI201000
6.5' (2 m) Roll*/cut	PRI202000
13' (4 m) Roll*/cut	PRI204000
*Roll length 69' (21 m) +/- (Custom sizes available) Available in Charcoal (20) only	

Chaparral™ Tile

EASY CLEANING DUAL FIBRE CONSTRUCTION

APPLICATION	Medium traffic wiper/scrapper matting
	Excellent slip-resistant surface
	Cut pile for moisture collection
	Blended colours complement almost any décor



face construction	Tufted
face style	Level cut pile
face material	Polyamide (PA6)
face weight	830 g/sq. m (24 oz/sq. yd)
backing	Bitumen
edging	Available
thickness	5/16' (8.0 mm)
total weight	3.91 kg/sq. m (0.80 lb/sq. ft)
warranty	1 year



size	part code
0.5 m x 0.5 m (1' 7" x 1' 7")	CPLCC5050
CC = Colour number	

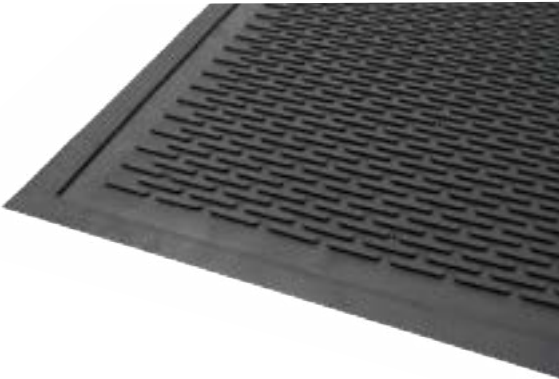


Scrapper Mat

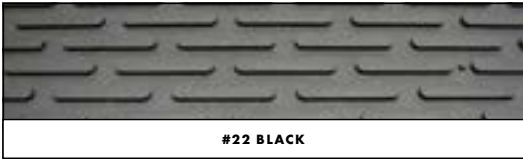


AN ALL-TIME ESSENTIAL, LOW PROFILE SCRAPER

APPLICATION	Outdoor
	Medium - heavy traffic
	Low maintenance and durable
	Minimal drying time needed
	Lightweight and easy to handle



construction	Natural rubber or nitrile
face style	Scraper bars
edging	Integrated
thickness	1/4" (6.5 mm)
total weight	5.52 kg/sq. m (1.13 lb/sq. ft)
warranty	3 year
recycled content: 22%	



size	part code
3' (0.9 m) x 5' (1.5 m)	SLM220305
4' (1.2 m) x 6' (1.8 m)*	SLM220406
* Available in nitrile only	



matting is about safety
Textured and absorbant mats increase traction

Good matting systems help
lower slip/fall
risks

light traffic

For entryways that see 100,000 or less users per year
Recommended for small offices, warehouses, retail,
and light-use entrances in large facilities



Style-Point™



CLASSIC BERBER LOOK WITH MULTIDIRECTIONAL WIPER/
SCRAPER EFFECTIVENESS

APPLICATION

- Indoor
- Light - medium traffic
- Ramp edges available

COMPOSITION

- Blended fibers enhance scraping and moisture wicking
- Traps fine to medium particles
- Easy to clean and maintain

construction	Needlepunch loop pile, dual fibre
face style	Berber (hobnail)
face material	75% Polypropylene, 25% PET
backing	Vinyl (PVC)
edging	Factory (add on available)
thickness	1/4" (6.5 mm)
total weight	2.98 kg/sq. m (0.61 lb/sq. ft)
warranty	1 year
recycled content: 5%	



size	part code
3' (0.9 m) x 4' (1.2 m)	STPCC0304
3' (0.9 m) x 5' (1.5 m)	STPCC0305
3' (0.9 m) x 6' (1.8 m)	STPCC0306
3' (0.9 m) x 10' (3.0 m)	STPCC0310
4' (1.2 m) x 6' (1.8 m)	STPCC0406
4' (1.2 m) x 8' (2.4 m)	STPCC0408
4' (1.2 m) x 10' (3.0 m)	STPCC0410

rolls	part code
3' (0.9 m) Roll*/cut	STPCC0300
4' (1.2 m) Roll*/cut	STPCC0400
6' (1.8 m) Roll*/cut	STPCC0600

*Roll length 60' (18.2 m) +/- CC = Colour number
(Custom sizes and edging program available)



Herringbone



ADDS A DYNAMIC LOOK TO AN EXCELLENT WIPER/SCRAPER

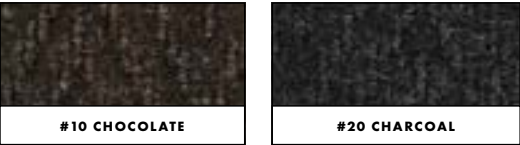
APPLICATION

- Indoor
- Light - medium traffic
- Ramp edges available

COMPOSITION

- Blended fibers enhance scraping and moisture wicking
- Traps fine to medium particles
- Easy to clean and maintain

construction	Needlepunch loop pile, dual fibre
face style	Chevron
face material	75% Polypropylene, 25% PET
backing	Vinyl (PVC)
edging	Factory (add on available)
thickness	1/4" (6.5 mm)
total weight	2.98 kg/sq. m (0.61 lb/sq. ft)
warranty	1 year
recycled content: 5%	



size	part code
3' (0.9 m) x 4' (1.2 m)	HBNCC0304
3' (0.9 m) x 5' (1.5 m)	HBNCC0305
3' (0.9 m) x 6' (1.8 m)	HBNCC0306
3' (0.9 m) x 10' (3.0 m)	HBNCC0310
4' (1.2 m) x 6' (1.8 m)	HBNCC0406
4' (1.2 m) x 8' (2.4 m)	HBNCC0408
4' (1.2 m) x 10' (3.0 m)	HBNCC0410

rolls	part code
3' (0.9 m) Roll */cut	HBNCC0300
4' (1.2 m) Roll */cut	HBNCC0400
6' (1.8 m) Roll */cut	HBNCC0600

*Roll length 60' (18.2 m) +/- CC = Colour number (Custom sizes and edging program available)



Harbour Point

LIGHT TRAFFIC NEEDLEFELT BERBER

APPLICATION

- Indoor/outdoor
- Permanently anti-static

COMPOSITION

- UV stability
- Dimensionally stable backing

construction	Needlepunch
face style	Berber (hobnail)
face material	100% Polypropylene
face weight	1310 g/sq. m (39 oz/sq. yd)
backing	DB
edging	Available
flammability	Efl, EN 13501-1
thickness	3/8" (9.2 mm)
total weight	2.06 kg/sq. m (0.42 lb/sq. ft)
warranty	1 year



size	part code
3.25' (1 m) Roll */cut	HPTCC1000
6.5' (2 m) Roll */cut	HPTCC2000
*Roll length 82' (25 m) +/- (Custom sizes available) CC = Colour number	



Twin Rib

LINEAR RIB DESIGNED TO CATCH MOISTURE

APPLICATION

- Indoor
- Light - medium traffic
- Ramp edges available

COMPOSITION

- Custom cuts available
- Ramp edges available

construction	Needlepunch
face style	Twin rib
backing	Vinyl (PVC)
edging	Factory (add on available)
thickness	1/4" (6.5 mm)
total weight	3.42 kg/sq. m (0.70 lb/sq. ft)
warranty	1 year



size	part code
3' (0.9 m) x 4' (1.2 m)	TWRCC0304
3' (0.9 m) x 5' (1.5 m)	TWRCC0305
3' (0.9 m) x 6' (1.8 m)	TWRCC0306
3' (0.9 m) x 10' (3.0 m)	TWRCC0310
4' (1.2 m) x 6' (1.8 m)	TWRCC0406
4' (1.2 m) x 8' (2.4 m)	TWRCC0408
4' (1.2 m) x 10' (3.0 m)	TWRCC0410
rolls	part code
3' (0.9 m) Roll*/cut	TWRCC0300
4' (1.2 m) Roll*/cut	TWRCC0400
6' (1.8 m) Roll*/cut	TWRCC0600
*Roll length 60' (18.2 m) +/- CC = Colour number (Custom sizes and edging program available)	



Poly-Tuft™

SOLID VALUE IN A CUT PILE WIPER MAT, EXCELLENT YEAR-ROUND

APPLICATION

- Indoor
- Light traffic
- Final mat in entrance system
- Optimal for tight door clearance

COMPOSITION

- Catches fine particles and moisture
- Custom cuts available
- Ramp edges available

construction	Tufted
face style	Cut pile
face material	Polypropylene
face weight	510 g/sq. m (15 oz/sq. yd)
backing	Vinyl (PVC)
edging	Factory (add on available)
thickness	5/16" (8 mm)
total weight	3.42 kg/sq. m (0.70 lb/sq. ft)
warranty	1 year



size	part code
3' (0.9 m) x 4' (1.2 m)	PTF200304
3' (0.9 m) x 5' (1.5 m)	PTF200305
3' (0.9 m) x 6' (1.8 m)	PTF200306
3' (0.9 m) x 10' (3.0 m)	PTF200310
4' (1.2 m) x 6' (1.8 m)	PTF200406
4' (1.2 m) x 8' (2.4 m)	PTF200408
4' (1.2 m) x 10' (3.0 m)	PTF200410
Other sizes available	
rolls	part code
3' (0.9 m) Roll**/cut	PTFCC0300
4' (1.2 m) Roll**/cut	PTFCC0400
6' (1.8 m) Roll**/cut	PTFCC0600
*Special order, full rolls only CC = Colour number	
**Roll length 60' (18.2 m) +/- (Custom sizes and edging program available)	



rent ^{OR} buy matting?

essentials for investing
in entrance solutions

Lower cleaning costs and safer indoor environments depend on the effectiveness of matting

While rented mats have lower upfront costs, purchasing matting is more versatile and cost-effective

Entrance matting is crucial in:

Reducing slip/fall hazards from
tracked water, dirt or debris

Longevity of floors

Improving air quality

Customer experience &
impression of your space

**Good matting
systems can trap**

80%
of tracked soil



why buy?

#1 THE BEST FIT

Every facility has different needs and purchased mats can be made to fit them

Give a better first impression and superior floor protection with diverse sizes, shapes, colours and backings

#2 EASIER MAINTENANCE

Purchased mats can be cleaned as a part of daily cleaning routines, offering more control over facility appearance and using less resources

Rental matting require removal, transporting and laundering

#3 COST-EFFECTIVE

Ongoing rental fees add up over time

Purchasing matting is a one-time cost that can be used for years, making it less expensive over time

#4 PERFORMANCE & SAFETY

Purchased mats are often more effective at stopping soil and dirt. Rental mats have limited soil capacity to minimize cleaning for the rental company

Purchased mats have stronger anti-slip backing and accessories make them less likely to flip, tear or cause tripping hazards



multi-site facilities, managed

We provide an **in-depth facility analysis** to complete projects **efficiently, accurately, and on schedule**, with resources to keep maintenance simple every year

real projects from start to finish



MUNICIPAL SCHOOL BOARD

628 custom-sized mats
Used in **222** entrances
In **60** schools
Project completed in: **90 DAYS**



MAJOR UNIVERSITY

500 custom-sized mats
Used in **356** entrances
In over **150** buildings
Project completed in: **3 WEEKS**



PROVINCIAL HEALTH BOARD

1,000 custom-sized mats
Shipped to over **100** locations
Project completed in: **6 WEEKS**



inquiries@edgewoodgroup.ca

canada-wide toll free: 1.800.668.1776

The descriptions in this catalogue are based on information provided and to our knowledge are accurate at the time of printing. There may be some minor variations between the images and the products sold. Specifications subject to change without notice. Errors and omissions excepted. V10825