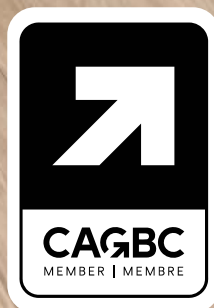


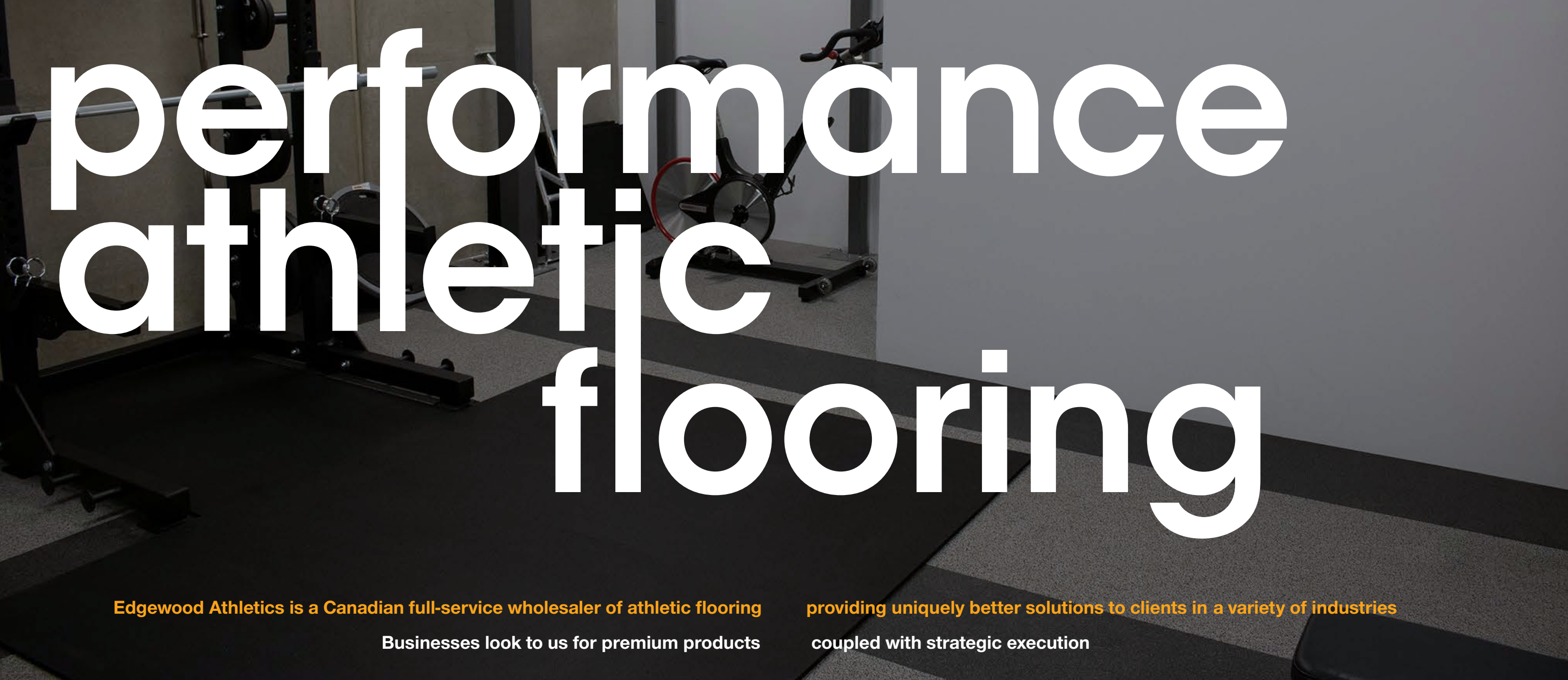
edgewood athletics

PERFORMANCE LAB



ONLINE CATALOGUES





performance athletic flooring

Edgewood Athletics is a Canadian full-service wholesaler of athletic flooring
Businesses look to us for premium products

providing uniquely better solutions to clients in a variety of industries
coupled with strategic execution

Edgewood Athletics products are

- slip resistant
- easy to install
- skate and spike resistant
- scuff and stain resistant
- shock absorbent
- easy to clean
- durable



Perfect for the architect and design community, our **design studio** has all the resources you need for specifying products
Compare product specifications, create and download submittals, and more at edgewoodgroup.concora.com

| | | | |
|-------------------------------------|----|------------------------------|----|
| Starfield™ Fitness Tile | 4 | Galaxy Pro Tile | 14 |
| Imber™ Fitness Tile | 5 | Galaxy Fitness Roll | 15 |
| Apollo™ Fitness Tile | 6 | Indoor ST | 16 |
| Constellation™ Fitness Tile | 7 | Indoor ST - Easy Roll | 16 |
| Solstice™ DLX 90 Fitness Tile | 8 | Weightlifting Platform | 17 |
| Solstice™ DLX Fitness Tile | 10 | GymPro® Eco-Roll | 18 |
| Solstice™ Fitness Tile | 11 | GymPro® Eco-Tile | 18 |
| Voyager™ Athletic Tile | 12 | Cleaners, Ramps & More | 19 |
| Voyager™ Residential | 13 | | |



starfield™



WEIGHT ROOMS • ICE RINKS • FITNESS CENTRES

Starfield™ features a vulcanized, dual-layer construction that has unmatched strength and durability for high-end and high-intensity environments

Formulated for skate, weightlifting, and intense training, Starfield™ dissipates impact and resists cuts and dents. The upper layer is anti-microbial and non-porous, helping keep your floors cleaner



| | |
|-------------------------|---|
| construction | vulcanized recycled and virgin rubber |
| thickness | 6 mm, 8 mm, 10 mm |
| total weight | 1 m x 1 m: 23–38 lb/tile 37.7" x 37.7" : 21–31 lb/tile 4' x 30' : 2.4–3.2 lb/sq. ft 4' x 50' : 1.8 lb/sq. ft |
| colour(s) | 5 colours |
| warranty | athletic facilities - 10 year ice arenas - 5 year |
| recycled content | 55% recycled content in base layer |

sizes

straight edge
1 m x 1 m
(10.76 sq. ft/tile)

interlocking
37.7" x 37.7"
(9.87 sq. ft/tile)

rolls
4' x 30'
4' x 50' (6 mm only)



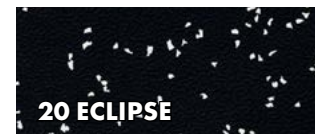
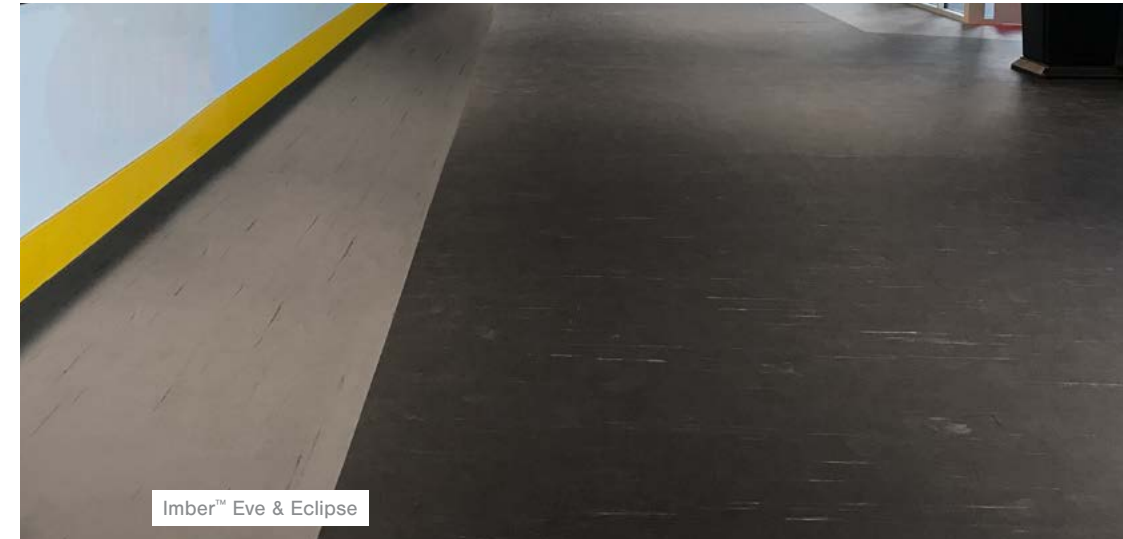
imber™



WEIGHT ROOMS • ICE RINKS • FITNESS CENTRES

Imber™ is engineered for high-performance: dissipating impact and resisting cuts and dents in skate, weightlifting, and intense training environments

The vulcanized, dual-layer construction gives Imber™ unparalleled resilience and traction. The anti-microbial and non-porous surface helps keep your floors cleaner



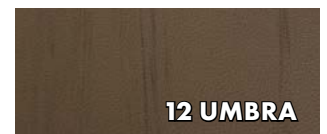
| | |
|-------------------------|---|
| construction | vulcanized recycled and virgin rubber |
| thickness | 6 mm, 8 mm, 10 mm |
| total weight | 1 m x 1 m: 23–38 lb/tile 37.7" x 37.7" : 21–31 lb/tile 4' x 30' : 2.4–3.2 lb/sq. ft 4' x 50' : 1.8 lb/sq. ft |
| colour(s) | 5 colours |
| warranty | athletic facilities - 10 year ice arenas - 5 year |
| recycled content | 55% recycled content in base layer |

sizes

straight edge
1 m x 1 m
(10.76 sq. ft/tile)

interlocking
37.7" x 37.7"
(9.87 sq. ft/tile)

rolls
4' x 30'
4' x 50' (6 mm only)





apolloTM



FITNESS CENTRES • FREE-WEIGHT AREAS • SOUND ABATEMENT

ApolloTM fitness tile is the ideal flooring solution for workout areas located above occupied spaces. This non-laminated, molded tile has superior vibration absorption and unparalleled noise reduction properties

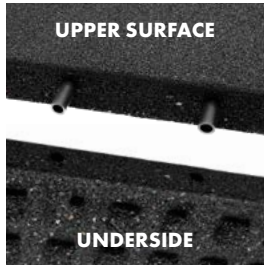
The grid-back design of the 1" tile is engineered to provide increased stability for cardio and weight lifting equipment. The 1.5" and 2.75" tiles provide additional sound reduction for free-weight areas



| | |
|------------------|---|
| construction | Polyurethane bonded recycled tires with EPDM colour fleck |
| ramp weight | 1" - 10 lb 1.5" - 14 lb 2.75" - 8 lb |
| total weight | 1" - 18 lb 1.5" - 24 lb 2.75" - 40 lb |
| thickness | 1", 1.5", 2.75" |
| colour(s) | Black, 40 additional |
| warranty | 5 year |
| recycled content | up to 100% |

| | |
|------------|---|
| sizes | straight edge 2' x 2' (4 sq. ft/tile) |
| ramp sizes | 1" x 12" x 36" - Black 1.5" x 18" x 36" - Black 2.75" x 11" x 19.5" - Black |

Minimum order for coloured tiles



ApolloTM Black with Ramps & Custom Inserts



constellationTM
with ever-flexTM



FITNESS CENTRES • FREE-WEIGHT AREAS

ConstellationTM fitness tile has a low odour, recycled rubber base combined with the easy cleaning Ever-FlexTM wear layer. This extremely durable non-rubber wear layer is available in a 2 or 3 mm thickness

Create your own Ever-FlexTM colour* to enhance your facility

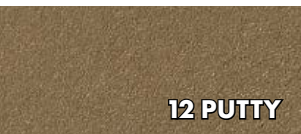


ConstellationTM Dark Grey



| | |
|------------------|---|
| construction | High performance rubber backing with Ever-Flex TM wear layer |
| ramps | Available |
| total weight | 20 lb - 10 mm |
| thickness | 8 mm, 10 mm, 12 mm |
| colour(s) | 4, custom colours available |
| warranty | 5 year |
| recycled content | up to 80% |

| | |
|-------|--|
| sizes | straight edge 38" x 38" (10 sq. ft/tile) |
|-------|--|



*Custom colours are available within three to four Pantones. Edgewood Athletics does not guarantee exact colour matching. Minimum order for custom coloured fitness tiles



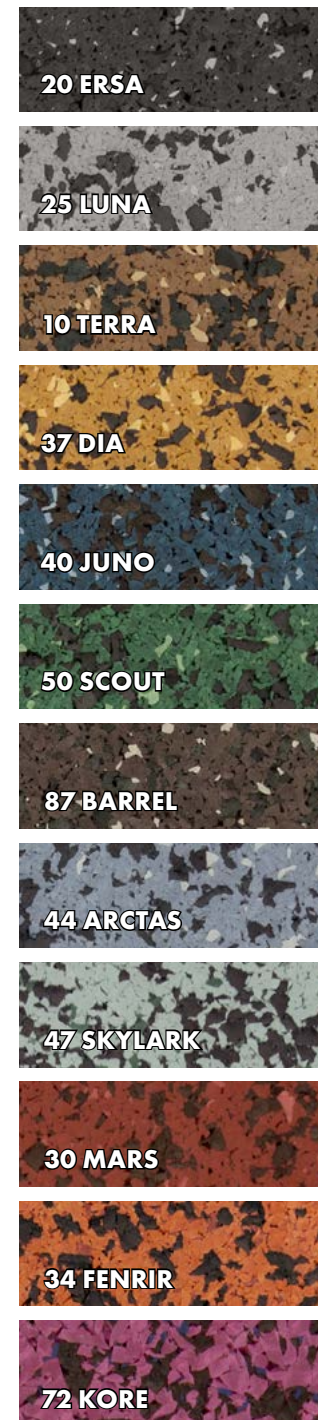
solstice™ dlx 90



FITNESS CENTRES • ICE RINKS • WEIGHT ROOMS • SKI LODGES

Solstice™ Dual-Layer Extreme (DLX) 90 is a high-performance, easy to install solution for high-impact areas and multipurpose applications. The unified colour palette elevates multicolour designs

Made from recycled tires and golf grips, it features a 3 mm or 4 mm high colour top wear layer on extreme backing. The 4 mm wear layer featured on Solstice™ DLX 90S is made to stand up to skate applications



| | |
|-------------------------|---|
| construction | Recycled SBR rubber from scrap tires and proprietary polymer binder |
| ramps | Available |
| total weight | 12.3 lb/sq. ft - 10 mm |
| thickness | 8 mm, 10 mm, 12 mm |
| colour(s) | 12 available |
| warranty | 5 year |
| wear layer | Solstice™ DLX 90 - 3 mm / Solstice™ DLX 90S - 4 mm |
| recycled content | 66-86% post-consumer content |

sizes

straight edge
38" x 38"
(10 sq. ft/tile)

interlocking
36" x 36"
(9 sq. ft/tile)



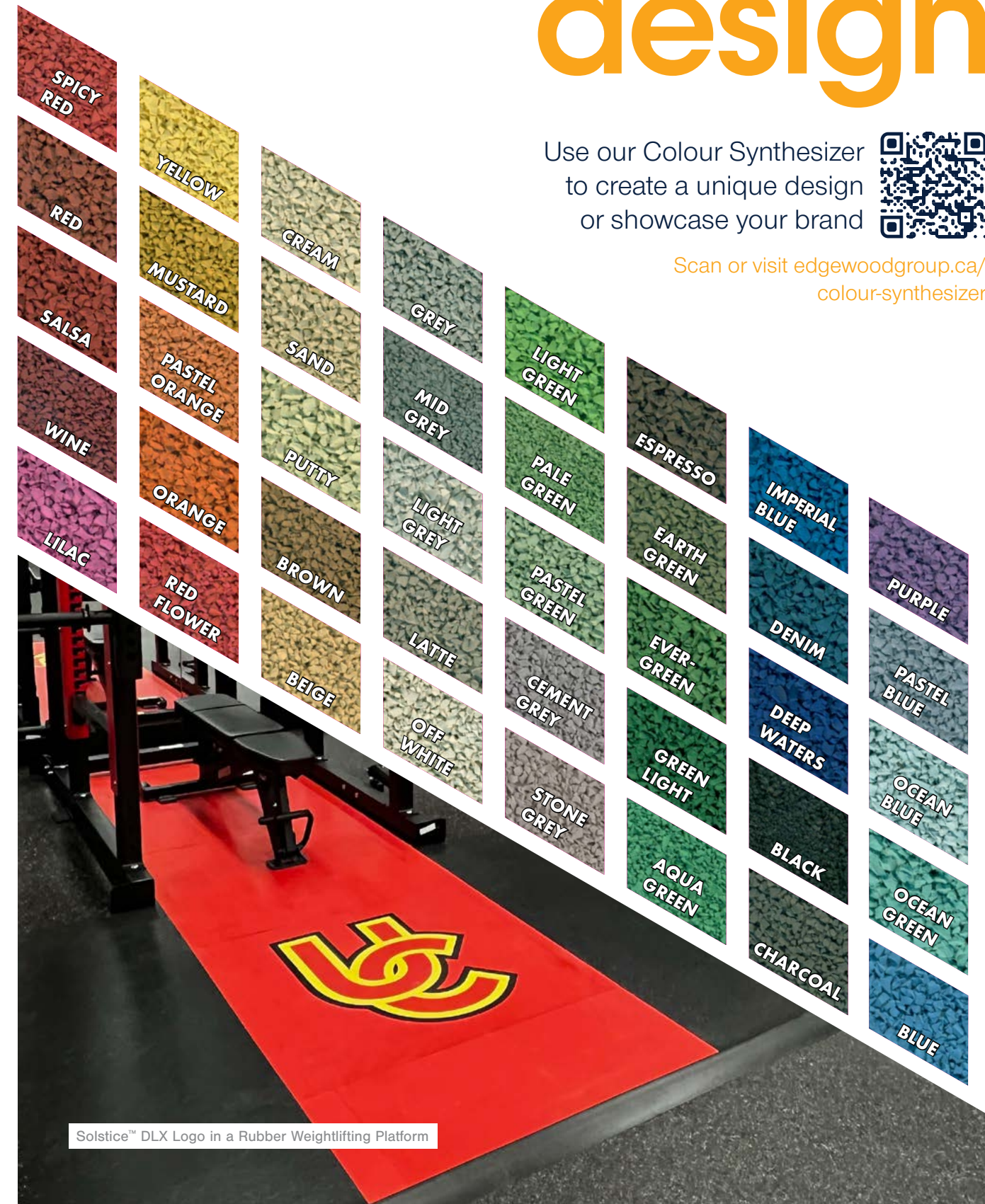
Solstice™ DLX 90 Ersa & Luna

bespoke design

Use our Colour Synthesizer to create a unique design or showcase your brand



Scan or visit edgewoodgroup.ca/colour-synthesizer



Solstice™ DLX Logo in a Rubber Weightlifting Platform

The colour flecks are CMYK representations only and are not for colour matching purposes. Available for select products



solstice™ dlx



FITNESS CENTRES • ICE RINKS • WEIGHT ROOMS • SKI LODGES

Solstice™ dual-layer extreme (DLX) fitness tiles are simple to install and a superior choice for heavy-impact areas and multi-purpose applications. The vibrant top layer gives a dynamic design and the high density base layer, made from recycled tires and golf grips, boosts strength



| | |
|------------------|--|
| construction | Polyurethane bonded recycled rubber flooring |
| ramps | Available |
| total weight | 2.3 lb/sq. ft - 10 mm |
| thickness | 8 mm, 10 mm & 12 mm |
| colour(s) | 4 available, 40 additional |
| warranty | 5 year |
| wear layer | 3 mm, 4 mm |
| recycled content | varies by thickness |

| |
|---|
| sizes |
| straight edge 38" x 38" (10 sq. ft/tile) |
| interlocking 36" x 36" (9 sq. ft/tile) |
| Minimum order for custom coloured fitness tiles |



solstice™

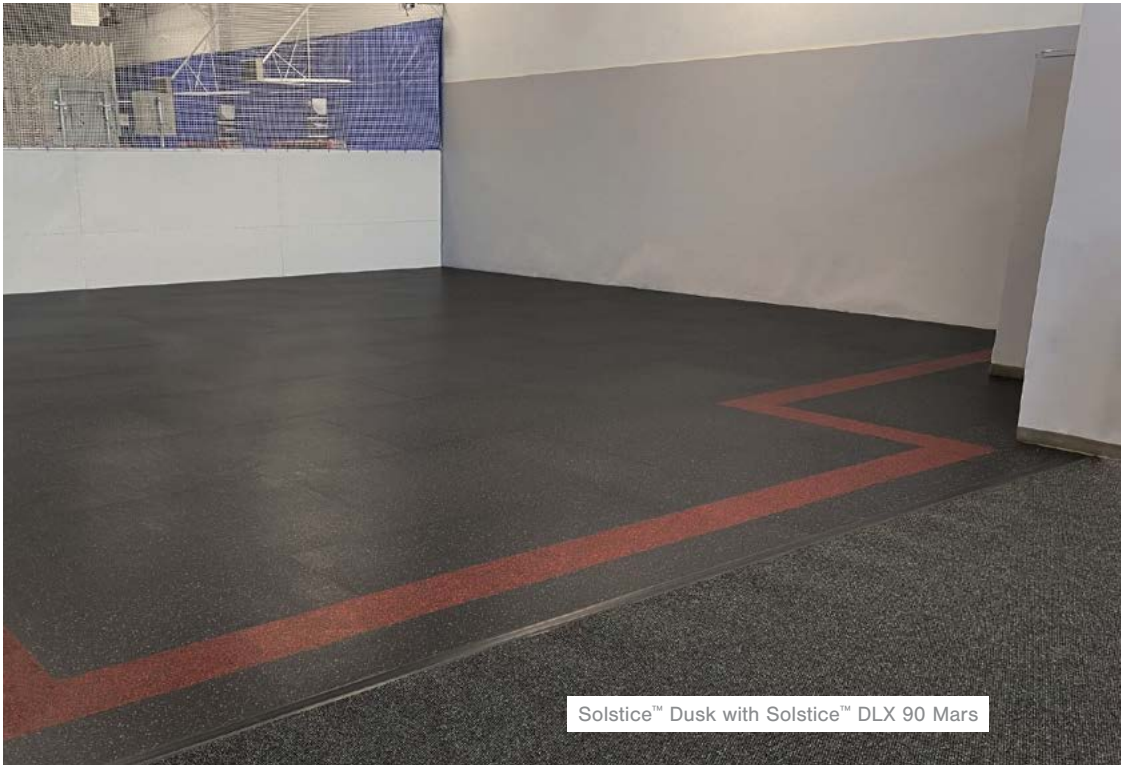


FITNESS CENTRES • ICE RINKS • WEIGHT ROOMS • SKI LODGES

Solstice™ fitness tiles are a simple to install, durable solution for impact areas and multi-purpose applications. This flooring reduces noise, absorbs impact and is environmentally friendly

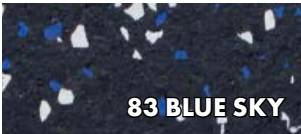


50-95% fleck



| | |
|------------------|--|
| construction | Polyurethane bonded recycled rubber flooring |
| ramps | Available |
| total weight | 2.3 lb/sq. ft - 10 mm |
| thickness | 8 mm, 10 mm, 12 mm |
| colour(s) | 5 available, 40 additional |
| warranty | 10 year |
| wear layer | 4 mm |
| recycled content | up to 100% |

| |
|--|
| sizes |
| straight edge 38" x 38" (10 sq. ft/tile) |
| interlocking 36" x 36" (9 sq. ft/tile) |



10% fleck



voyager™



WEIGHT ROOMS • ICE RINKS • FITNESS CENTRES

Voyager™ is homogeneous and cut resistant, making it a strong choice for a long-lasting appearance in a variety of applications



construction PU bonded recycled rubber

thickness 9.5 mm, 12 mm, 15 mm, 19 mm

total weight

24" x 24" x 9.5 mm - 8.0 lb

46" x 69" x 9.5 mm - 44 lb
x 12 mm - 57 lb
x 15 mm - 72 lb

48" x 72" x 9.5 mm - 48 lb
x 12 mm - 62 lb
x 15 mm - 78 lb
x 19 mm - 98 lb

colour(s) 5 colours

warranty 5 year

recycled content 93% (speckled)
100% (black)

sizes

straight edge
48" x 72"
(24 sq. ft/tile)

interlocking
24" x 24"
(4 sq. ft/tile)
46" x 69"
(22 sq. ft/tile)

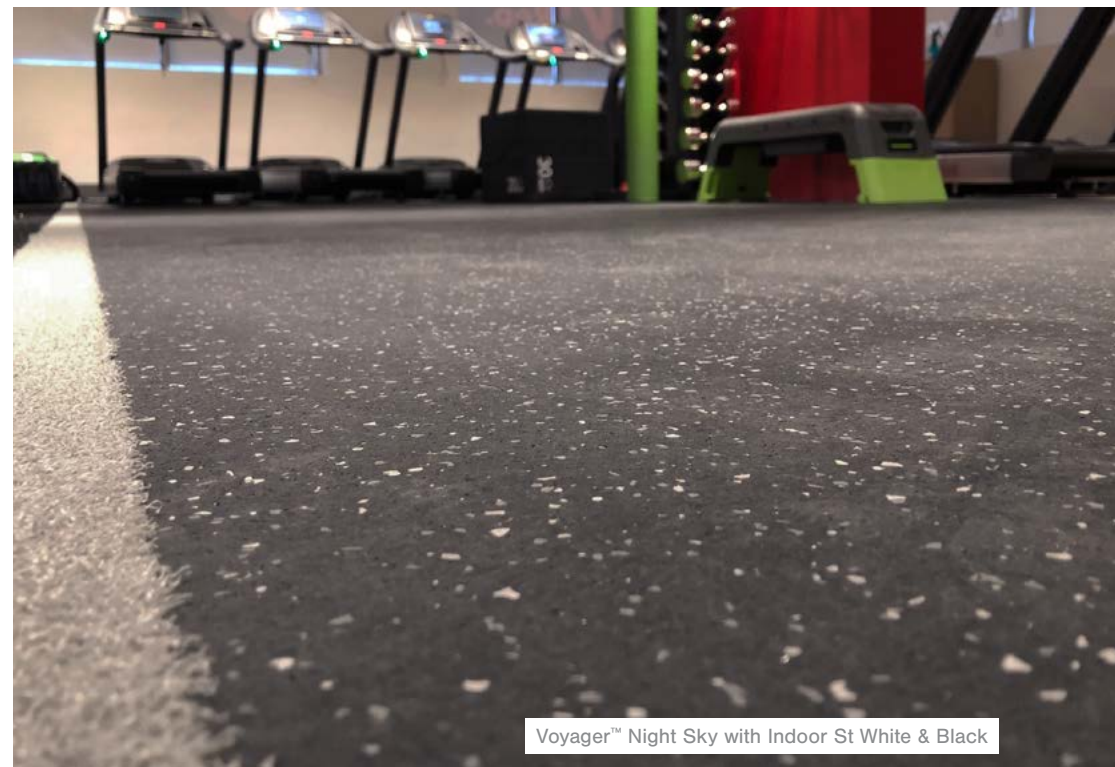
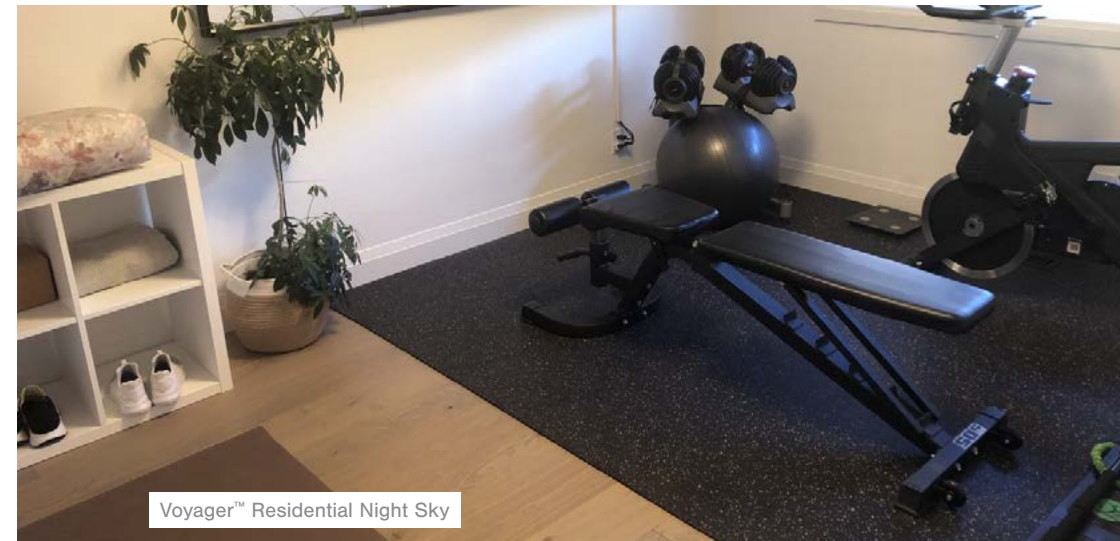


voyager™ residential



HOME EXERCISE ROOMS • HOME GYMS • RECREATION ROOMS

Voyager™ Residential has all the strengths of our Voyager™ formula optimized for home – light enough to do it yourself, heavy enough to last



construction PU bonded recycled rubber

thickness 6 mm

total weight

24" x 24" - 6 lb
46" x 69" - 30 lb
48" x 72" - 32 lb

colour(s) 5 colours

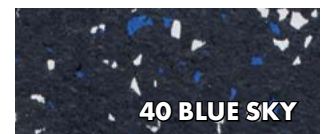
warranty 5 year

recycled content 93% (speckled)
100% (black)

sizes

straight edge
48" x 72"
(24 sq. ft/tile)

interlocking
24" x 24"
(4 sq. ft/tile)
46" x 69"
(22 sq. ft/tile)





galaxy pro tile

FITNESS CENTRES • ICE RINKS • HIGH TRAFFIC ATHLETIC FACILITIES

Made from vulcanized recycled rubber, Galaxy™ Pro Tile is formulated to thrive in skate areas and high traffic athletic and fitness facilities

Durable and resilient, this anti-microbial and non-porous design keeps your floors cleaner and makes maintenance easier



| | |
|------------------|---------------------------------|
| construction | Vulcanized 100% recycled rubber |
| total weight | 48" x 72" : 60–70 lb/tile |
| | 46" x 69" : 55–64 lb/tile |
| | 22" x 22" : 8.4–9.8 lb/tile |
| thickness | 3/8", 1/2" |
| colour(s) | Black |
| warranty | 5 year |
| recycled content | 100% |

| | |
|-------|---------------------------------|
| sizes | straight edge |
| | 48" x 72" (24 sq. ft/tile) |
| | 22" x 22" (3.36 sq. ft/tile) |
| | interlocking |
| | 46" x 69" (22 sq. ft/tile) |



galaxy

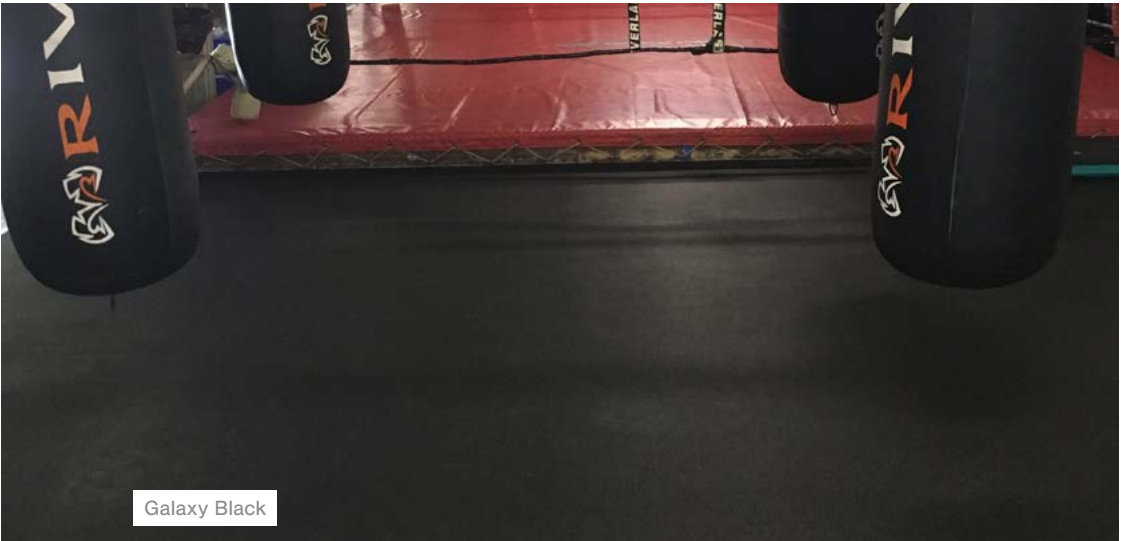
fitness roll



FITNESS CENTRES • GYMNASIUMS

Galaxy fitness roll is a 4' wide athletic flooring roll made from recycled rubber and is resistant to scuffs and stains

While designed for athletic purposes, Galaxy can also be used in utility areas, washrooms and light industrial areas



| | |
|------------------|---|
| construction | Recycled rubber from tires and waste rubber |
| total weight | 1.95 lb/sq. ft |
| thickness | 3/8" (9.5 mm) |
| colour(s) | 4 standard, Custom colours available |
| warranty | 5 year |
| recycled content | Black - 100% Speckle - 90% |

| | |
|-------|----------|
| sizes | rolls |
| | 4' x 27' |



Available in full rolls or custom cuts. See website for up-to-date colour options



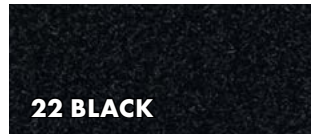
indoor ST/easy roll

INDOOR FIELDS • TRAINING FACILITIES

The tough polyethylene face has superior wear resistance and provides a less abrasive surface than nylon or polypropylene

Indoor ST turf system features a 5 mm shock-absorbing foam backing and textured polyethylene for an excellent ball roll

Indoor ST - Easy Roll has DuraPlay backing for flexible loose lay applications. Double-sided tape holds seams together for easy installation/removal



22 BLACK



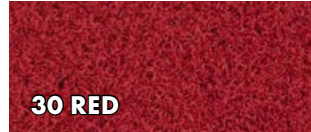
50 GREEN



25 GREY



14 TERRA COTTA



30 RED



41 ROYAL BLUE



23 WHITE



37 YELLOW



Indoor ST Green & White with Voyager™ Black

| | Indoor ST | Easy Roll |
|--------------|----------------------------|--------------------|
| face | 48 oz • 58 oz Polyethylene | 48 oz Polyethylene |
| backing | Foam | DuraPlay backing |
| total weight | 0.86 lb/sq. ft | 0.91 lb/sq. ft |
| thickness | 19 mm (3/4")* | 14.5 mm (9/16") |
| colour(s) | 8 colours | |
| warranty | 8 year | |

| sizes |
|------------|
| rolls |
| 15' x 50' |
| 15' x 100' |

Custom lengths available

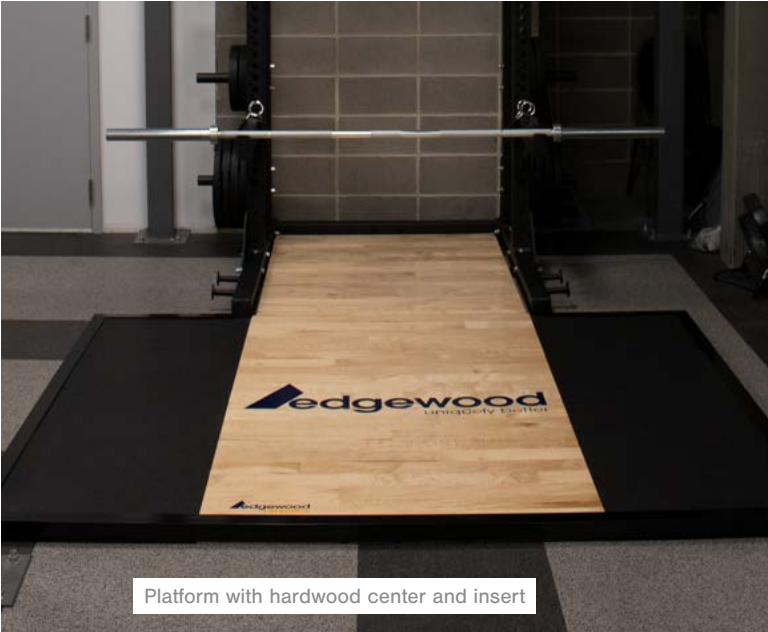
*14.5 mm (9/16") pile height
Thicker backing available



weightlifting platform

POWERLIFTING STATIONS

The solution to heavy weight drops in fitness centres and home gyms. Our weightlifting platform protects your floors and can be ordered with impact zone sound dampening tiles that reduce noise by up to 30%. Available with maple hardwood center or in full rubber



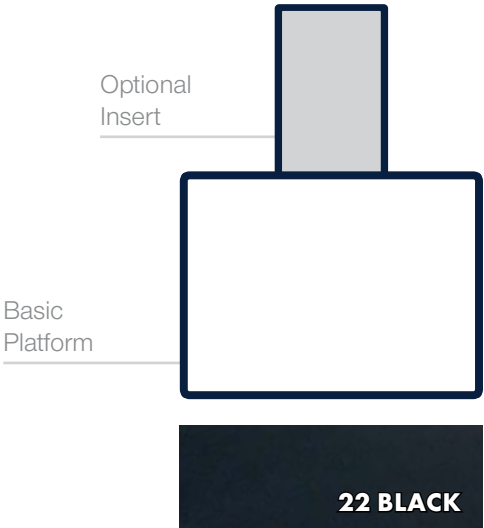
Platform with hardwood center and insert



Full rubber platform with insert

| | |
|--------------|---|
| construction | Multi-layer construction; sound dampening rubber base, rubber impact zone top surface, hardwood center section or full rubber |
| ramps | Steel frame (for maple hardwood center) |
| thickness | 2.25" (57.15 mm) |
| colour(s) | Black |
| warranty | 1 year |

| sizes |
|---------|
| 6' x 8' |



Optional Insert

Basic Platform

22 BLACK

Custom sizes available. Ships in sections, assembly required



GYMNASIUMS • MULTI-PURPOSE ROOMS

Eco-Roll gives you the protection you need when hosting non-athletic events, multiplying the usability of your gymnasium. Its top surface provides a high-end look that is easy to clean while the thermal plastic backing keeps the mat stable and flat

Unlike other roll products that may wrinkle and create tripping hazards, the Eco-Roll will stay flat and smooth when placed properly with the associated Lay-Up Racking System



| | |
|------------------|--------------------|
| face material | Recycled PET fibre |
| face style | Dilour |
| total weight | 0.11 lb/sq. ft |
| thickness | 1/8" (3.175 mm) |
| colour(s) | Charcoal |
| warranty | 3 year |
| recycled content | 100% |

sizes

6' x custom length

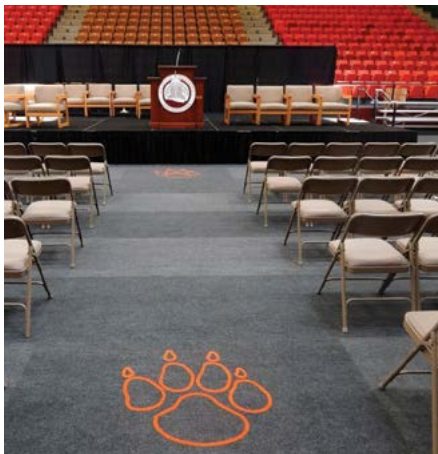


eco-roll

GYMNASIUMS • MULTI-PURPOSE ROOMS

Eco-Tile offers a high level of protection for your hardwood floor while withstanding everything from street shoes to chairs. The top surface provides a high-end look that is easy to clean, while the thermal plastic backing keeps the mat stable and flat. The tile system offers great flexibility for how you cover your floor and can be installed quickly

| | |
|------------------|------------------------------------|
| sizes | 35" x 70" (17 sq. ft/tile) |
| face material | Recycled PET fibre |
| face style | Dilour |
| total weight | 2.53 kg./sq. m (0.52 lb/sq. ft) |
| thickness | 1/4" (6.35 mm) |
| colour(s) | Charcoal |
| warranty | 7 year |
| recycled content | 22% |



eco-tile

protect & enhance
CLEANERS, RAMPS & MORE



cleaners & sealants



Profi™ 3.78 L (1 gal)
Non-ionic oil and grease
remover for cleaning all resilient
and synthetic rubber flooring

Wiwax™ 3.78 L (1 gal)
A unique blend of waxes, polymers
and detergents to effectively clean
and maintain rubber

adhesive



MF Bond It 7.57 L (2 gal)
Install-friendly 1-part chemistry. Engineered for heavy rolling loads and
challenging environments, the waterproof design forms a robust moisture
barrier and can also take the punishment introduced by topical liquids.
See our website for estimated coverage and trowel types

ramps

EDGEWOOD
EXCLUSIVE RAMPS

Ramps designed
with tabs to adhere to
athletic flooring

Heavy Duty: 1/4" x 1 1/4" with 1" tab – 100' lengths*
Super Duty: 5/16" x 1 5/8" with 1 1/2" tab – 36' lengths*
UltraFlex: 3/8" x 1 5/8" with 1 1/2" tab – 36' lengths*
*Cuts available

CARTSMART RAMPS

Made to withstand cart
traffic and complies
with accessibility
requirements. Designed
to adhere to the subfloor

Regular Duty: 3/8" x 3 1/2" – 12' or 14' length
Heavy Duty: 1/2" x 4" – 12' or 14' length

installation materials

Double Sided Installation Tape: 2" (50.8 mm) x 75' (22.86 m) - White
Trowel: Spreader #31: 9" x (1/16" x 1/16" x 1/16") square-notched
Seam Holding Tape: 60 mm x 66 m - Red



service hub

18120 109 Ave. NW Edmonton, AB T5S 2K2

T : 780.466.2084 F : 780.468.9104

inquiries@edgewoodgroup.ca

1.800.668.1776