

# commercial entrance systems



Scan to  
view this  
catalogue  
& more online



 **edgewood**  
uniquely better





our **design  
studio**



edgewoodgroup.  
archbase.io

has all you need for selecting  
and specifying products

Compare product specifications, access revit content,  
create/download submittals & more

**Edgewood is a Canadian full-service wholesaler of matting and athletic flooring**  
**Businesses look to us for premium products coupled with strategic execution**

**entrance systems**

Debris Trap™	6/7
Debris Trap™ Tile	8
Debris Trap™ Mesh / Debris Trap™ Roll	9
Debris Trap™ Purcell / Debris Trap™ Supreme	10/11
Debris Trap™ Everest / Debris Trap™ Tundra	10/11
Debris Trap™ Chaparral	10/11
Debris Trap™ Insert Options	12
Base Specialties™	13
BaseGrille SS-900 Stainless Steel	14
BaseGrille SS-800 Stainless Steel	15
BaseGrid GB-700	16
BaseTread GB-500	17
BaseTread GB-200	18
BaseMat MB-400	19
BaseMat MB-300	20
BaseTray 1000	21
Base Series Frames/Inserts/Finish Options	21/22

**heavy traffic**

Purcell™	24
Everest™	25
Supreme Knob™	26
Inlay Logo Matting	27
Tundra™	28

**heavy traffic tile**

Everest™ Tile	29
Supreme Knob™ Tile	30
Supreme Diagonal Tile	31
Chaparral™ Tile	31

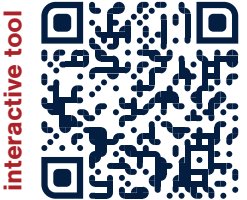


We are a Canada Green  
Building Council member  
and can assist with projects  
seeking green certification



discover the right  
matting solutions for  
your space with our

**matting  
placement  
guide**



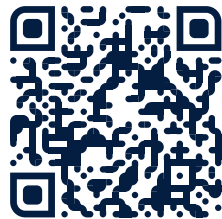
interactive tool

edgewoodgroup.ca/  
mat-placement-chart



# specifying guide

## get the right fit and finish



Recessed mat  
install video

# entrance systems

### SITE DETAILS

- ✓ Width, length and depth of the well
- ✓ Direction of traffic across the well
- ✓ Door location in relation to the width or length
- ✓ Measure corner to corner to determine how square the well is



← Traffic flow →



↖ Traffic flow ↗

### DESIGN DETAILS

- ✓ For aluminum, specify the finish type (mill finish, clear anodized, bronze, etc.)
- ✓ Type & colour of insert required (carpet slats, aluminum, grit-top, vinyl, etc.)
- ✓ Additional features required (outside framing, pan and/or drain, spacers)

### keep dirt and moisture contained and traffic paths safe

For primary points of entry, these systems include a mat or series of mats to contain contaminants and maintain a slip-resistant entrance

Made to complement building design, entrance systems from Edgewood are developed with attention to detail, ensuring they perform as they should for years

### TIPS

- For slat style products the traffic flow is opposite to the direction of the slats
- Custom designed mats require drawings in addition to installation considerations



# debris trap™

EXCLUSIVE ENTRANCE SYSTEM  
FOR HEAVY TRAFFIC

Traps debris below surface  
Improves indoor air quality

Mitigates slip and fall risk  
Diverse options to enhance design

## MODULAR DESIGN

- Roll & tile options ship easily
- Lighter and easy to move for maintenance
- Reconnectable interlocking tile
- No custom manufacturing delays
- Repairable without complete replacement

## COMPOSITION

High Density Polymer:

- Recyclable
- Reduces walking noise
- More cost effective then metal
- Superior static load capacity  
6614 lb/sq ft (3000 kg/0.031 sq m)

## INSTALLATION

- Easy to retrofit onsite
- Flexible and easy to handle
- Frame options for large areas
- Designed for ½" recessed wells
- Surface mount or recessed options

## Recessed Well Installation



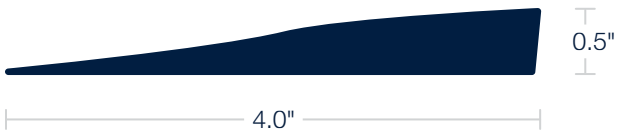
## Permanent Surface Mount with Aluminum Ramp



## Surface Mount with CartSmart Ramp



**CartSmart Polymer Ramp**  
12' or 14' lengths



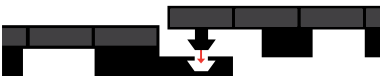
**Aluminum Reducer Ramps**  
12' lengths



**Aluminum Divider**  
12' lengths



## Reconnectable Interlocking Tile



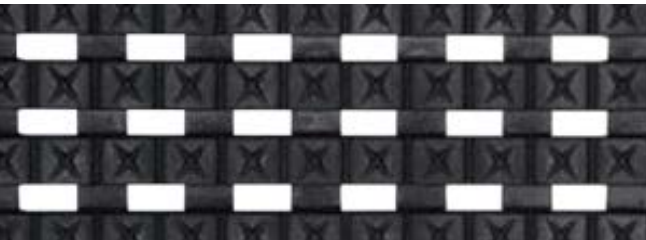
size	part code
2.63" Aluminum ramp	RMPCC0312
4.0" Cart Smart ramp	SRV220412
0.75" Aluminum divider	DIVCC1212
14 mm J Frame	JFRCC1412
0.25" x 2.0" Anchor	ANCC1402

CC = Colour number - 01 Mill finish, 22 Black

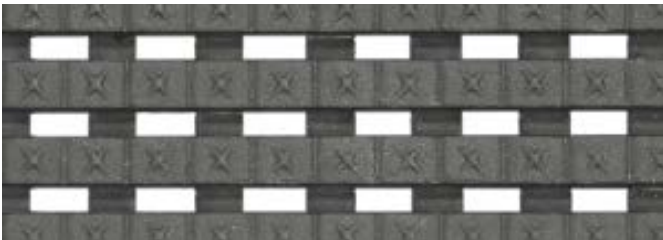




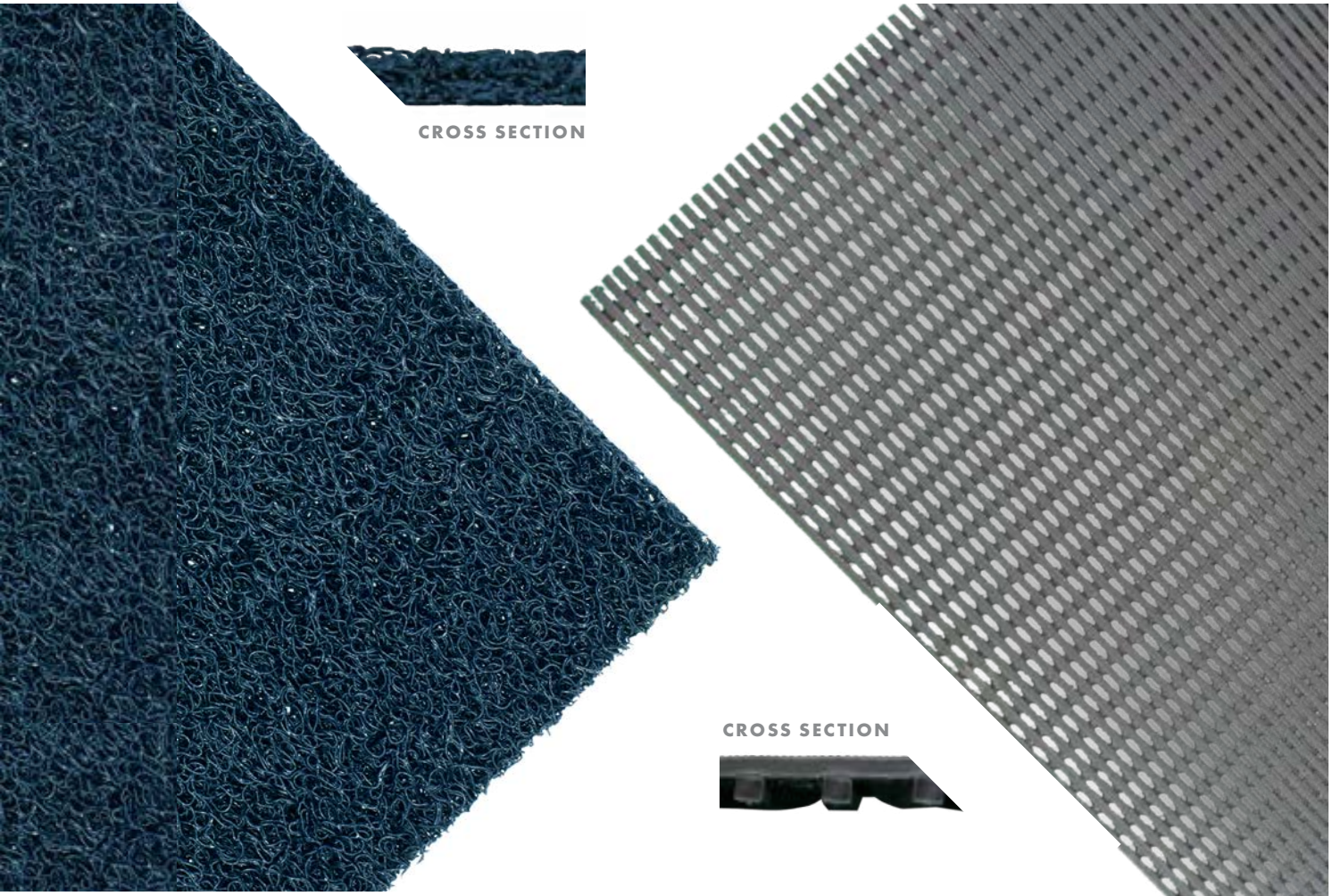
Debris Trap™ Tile



#22 BLACK



#25 GREY



CROSS SECTION

CROSS SECTION

Debris Trap™ Mesh

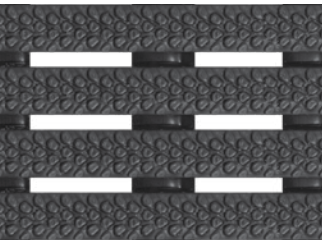
Debris Trap™ Roll



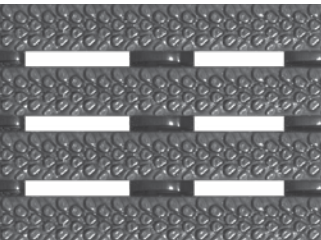
#22 BLACK



#40 BLUE



#22 BLACK



#25 GREY

	construction	ramps	thickness	total weight	warranty	slip resistance	static load	size	part code
debris trap™ tile	Textured vinyl grid	Available	½" (12.5 mm)	1.18 kg (2.60 lb)	3 year	DIN 51130, R13	6614 lb/sq ft (3000 kg/0.031 sq m)	11⅝" x 17⅝" (0.30 m x 0.45 m)	DTI <b>CC</b> 1218
debris trap™ roll	Textured vinyl grid		½" (12.5 mm)	8.10 kg/sq. m (1.66 lb/sq. ft)	3 year	DIN 51130, R13	6614 lb/sq ft (3000 kg/0.031 sq m)	2' (0.6 m) roll*/cut 3' (0.9 m) roll*/cut 4' (1.2 m) roll*/cut	DTR <b>CC</b> 0200 DTR <b>CC</b> 0300 DTR <b>CC</b> 0400
debris trap™ mesh	Vinyl loop		9/16" +/- 1/16" (14 +/- 2 mm)	4.67 kg/sq. m (0.96 lb/sq. ft)	2 year	-	-	4' (1.2 m) roll**/cut	DTM <b>CC</b> 0400

Debris Trap™ products designed for 1/2"

(12.5 mm) recess • up to 50% recycled content

\*Roll lengths 33' (10 m) +/- \*\*Roll lengths 40' (12.2 m) +/-  
CC = Colour number





Debris Trap™ Supreme



Debris Trap™ Everest



	construction	ramps	thickness	total weight	warranty	slip resistance	static load	size	part code
debris trap™ purcell	Vinyl grid with level loop inserts	Available	½" (12.5 mm)	1.12 kg (2.46 lb)	3 year	DIN 51130, R13	6614 lb/sq ft (3000 kg/0.031 sq m)	11⅝" x 17⅝" (0.30 m x 0.45 m)	DTHCC1218
debris trap™ supreme	Vinyl grid with Berber inserts		1⅛" (17.5 mm)	1.12 kg (2.46 lb)	3 year				DTSCC1218
debris trap™ everest	Vinyl grid with omni pattern inserts		1⅛" (17.5 mm)	1.10 kg (2.42 lb)	3 year				DTECC1218
debris trap™ tundra	Vinyl grid with tufted grass inserts		1⅛" (17.5 mm)	1.06 kg (2.32 lb)	2 year				DTTCC1218
debris trap™ chaparral	Vinyl grid with level cut pile inserts		½" (12.5 mm)	1.12 kg (2.46 lb)	2 year				DTCCC1218

Debris Trap™ products designed for 1/2" (12.5 mm) recess • 25% recycled content

CC = Colour number



## Tile Colour



#22 BLACK



#25 GREY



#15 BEIGE



#19 BRONZE



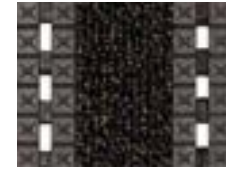
#20 CHARCOAL



#27 DARK GREY

## Everest™

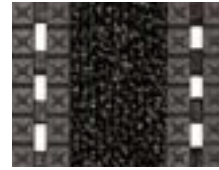
## Purcell™



#10 CHOCOLATE



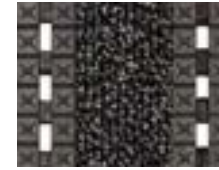
#15 BEIGE



#20 CHARCOAL

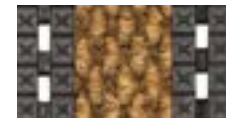


#22 BLACK



#27 DARK GREY

## Supreme Knob™



#05 NATURAL



#06 DESERT



#10 CHOCOLATE



#11 WALNUT



#15 BEIGE



#18 TAUPE



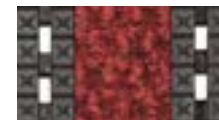
#20 CHARCOAL



#27 DARK GREY



#28 BLACK GOLD



#30 RED



#35 BURGUNDY



#40 BLUE



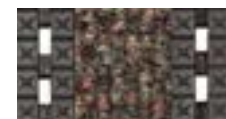
#43 DARK BLUE



#45 IMPERIAL  
BLUE



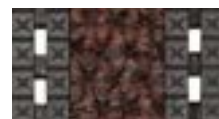
#50 GREEN



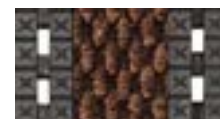
#52 HARVEST



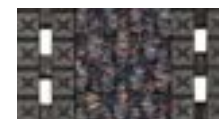
#54 LODEN



#61 ROSEWOOD



#69 ARIZONA



#75 RAINBOW

## Tundra™

## Chaparral™



#10 BROWN



#20 CHARCOAL



#25 GREY



#52 ONYX



#70 SLATE



#80 GRANITE

# base specialties™

GRILLE SYSTEMS FOR HEAVY TRAFFIC

Traps debris below surface

Improves indoor air quality

Mitigates slip/fall risk

## CONSTRUCTION

- Dimensionally stable metal framework
- Replaceable components
- Large soil trapping capacity

## DESIGN

- High-end aesthetic
- Diverse designs
- Variety of insert options
- Long lifespan





# BaseGrille SS-900 Stainless Steel



Stainless steel profile bars are designed for flexibility, strength, corrosion resistance, and have an interlocked construction

- Supports foot and cart traffic
- Keeps “like new” appearance year over year
- Recessed applications
- Surface beams are mechanically interlocked to cross struts to ensure longevity
- Indoor/outdoor



SS-900



SS-900C



SS-900R



LEED	v4 MRp2, v4 MRc1, v4 MRc3, v4 EQc1, v4 EQc2
construction	Floor Panels consist of precision spaced, mechanically interlocked profile wires and U-clip supports from Type 304 or 316 stainless steel. The tread surface opening is 0.140" (3.6 mm) or 0.187" (4.7 mm). The maximum opening between the wires is 3/16" (4.8 mm)
traffic rating	Heavy Traffic
load rating	1000 lb per Wheel
thickness	5/8", 3/4", 7/8", 1 1/8"
tread finish	Satin, stainless steel. SS-900C compatible with monoscape and polybrush inserts
warranty	5 year

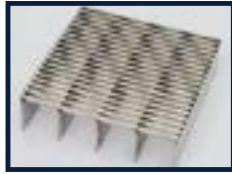


# BaseGrille SS-800 Stainless Steel

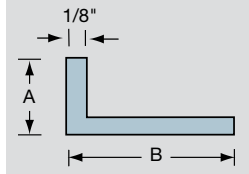


Steel strength with a smooth surface that's resistant to clogging

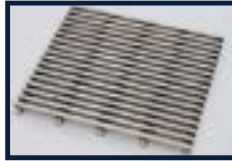
- Supports foot and cart traffic
- Keeps “like new” appearance year over year
- Recessed applications
- Surface beams robotically welded to cross struts to ensure longevity
- Indoor/outdoor



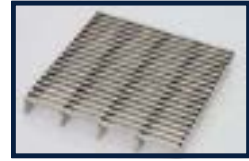
1 1/4" Grille (SS-898)  
Frame: A= 1 1/4" B= 3/4"



L Series frame available for Recessed Application



3/8" Grille (SS-838)



5/8" Grille (SS-858)  
Frame: A=3/4" B= 1 1/8"

LEED	v4 MRp2, v4 MRc1, v4 MRc3, v4 EQc1, v4 EQc2
construction	Stainless steel with support bars spaced 1" apart for maximum load capacity. Surface Wires: 0.09" (2.29 mm) by 0.15" (3.8 mm) wire with 0.070" (1.8 mm) support bars spaced 1" (24 mm) O.C. Spacing between wires is 0.235" (5.97 mm) O.C
traffic rating	Heavy Traffic
load rating	1000 lb per Wheel
thickness	3/8", 5/8", 1 1/8"
tread finish	Satin, stainless steel
warranty	5 year



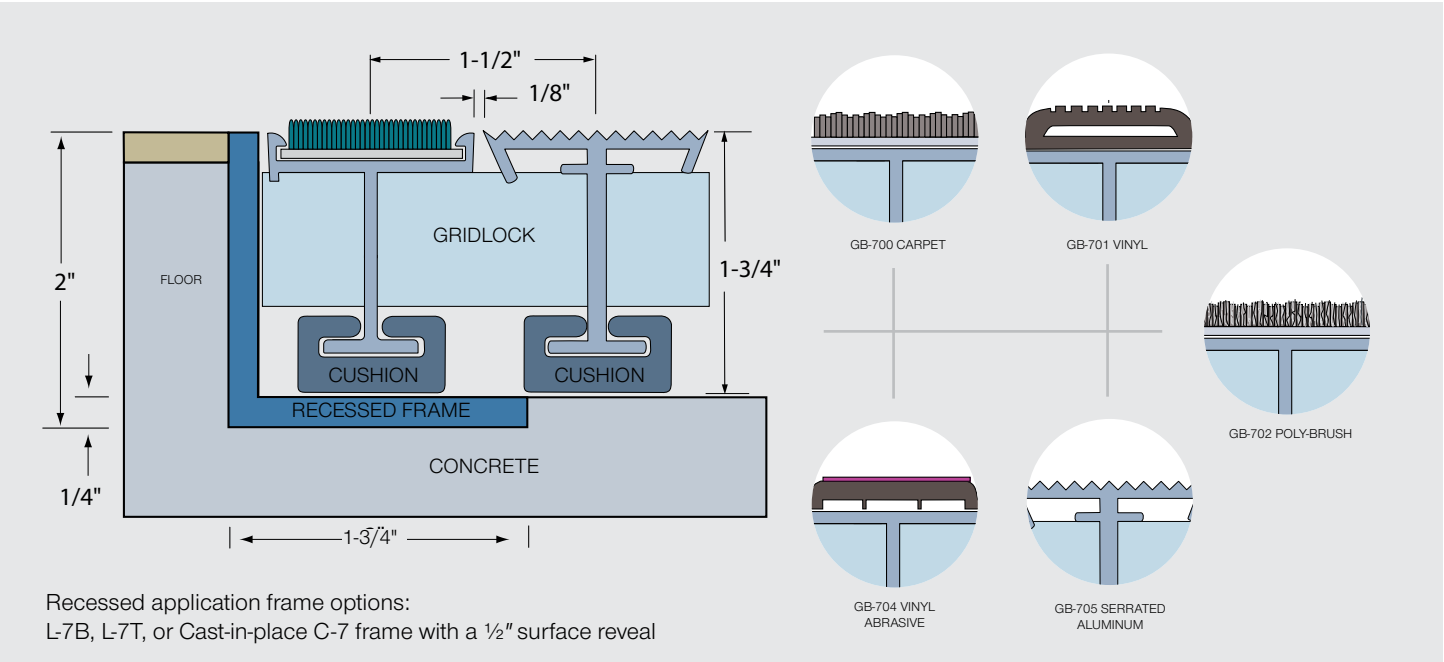




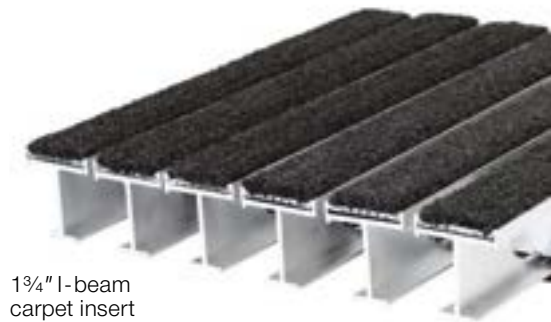
# BaseGrid GB-700

Offers sound footing while helping keep buildings safe and clean

- Supports foot and cart traffic
- Recessed applications
- Keeps “like new” appearance year over year
- Indoor/outdoor



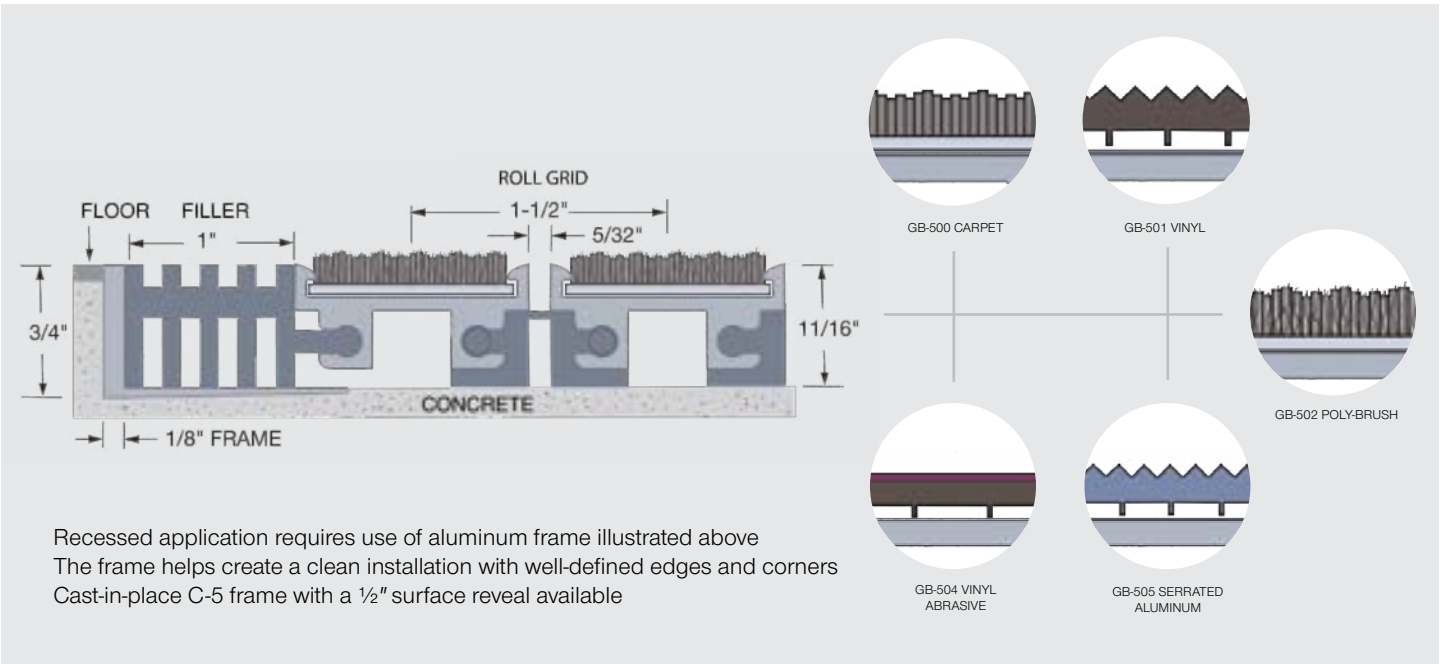
LEED	v4 MR p2, v4 MR c1, v4 MR c3, v4 EQ c1
construction	6063-T6 Aluminum with various insert options
traffic rating	Heavy Traffic
load rating	400 lb per Wheel
thickness	Grid only; 1 3/4" (44.4 mm)
	Grid and frame (level base); 2" (50.8 mm)
additional specs	Aluminum gridlock cross member, vinyl cushions. 1/8" cushion option for 1 5/8" depth
warranty	2 year
recycled content: 49% pre-consumer	



# BaseTread GB-500

The industry’s strongest aluminum grid capable of bearing 1,000 lb per wheel load

- Vinyl hinge allows for rolling of mat for under tread cleaning
- Supports foot and cart traffic
- Vinyl footer provides a low impact cushion for traffic noise
- 25% more wiping area
- Smooth surface for less wheel bump
- Recessed Applications



LEED	v4 MR p2, v4 MR c1, v4 MR c3, v4 EQ c1
construction	6063-T6 Aluminum with various insert options
traffic rating	Medium to Heavy Traffic
load rating	1000 lb per Wheel
thickness	3/4" (19 mm)
additional specs	Weather resistant vinyl hinges
warranty	2 year
recycled content: 38% pre-consumer	



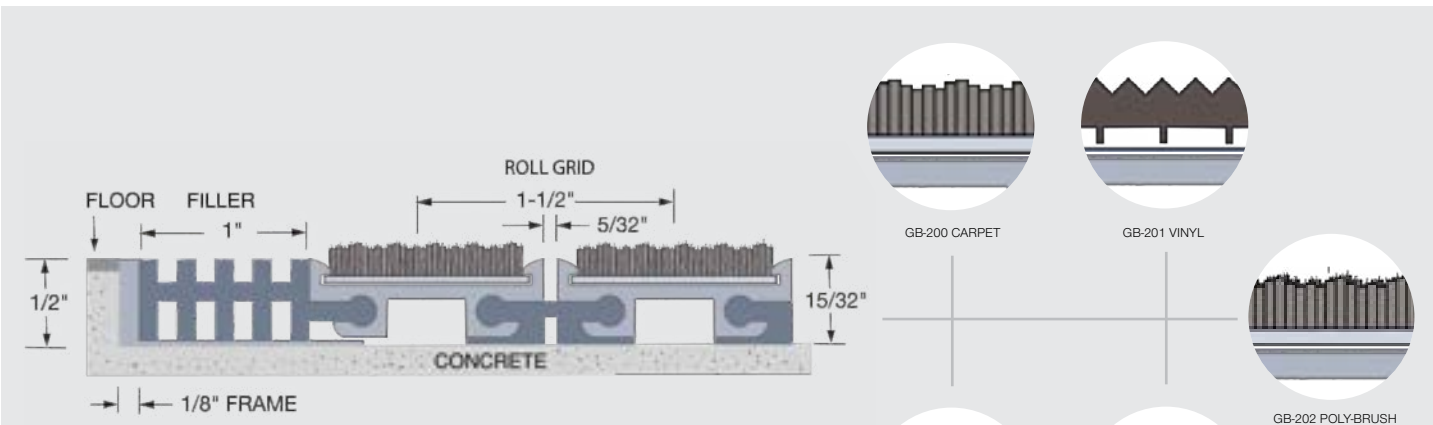




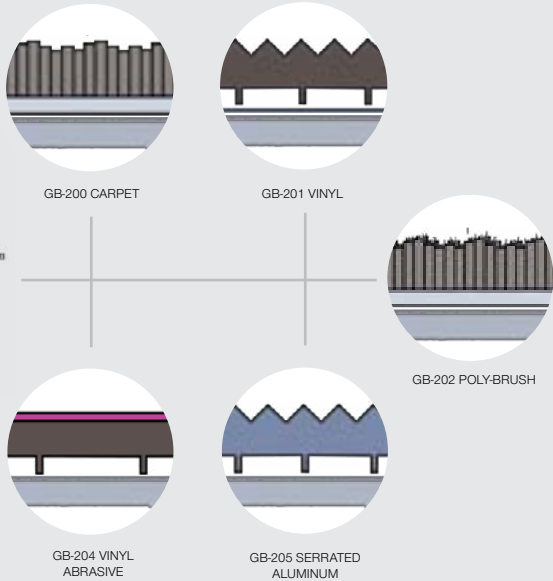
# BaseTread GB-200

A heavy-duty deep mat capable of bearing a 750 lb per wheel load

- Vinyl hinge allows for rolling of mat for under tread cleaning
- Vinyl footer provides a low impact cushion for traffic noise
- Supports foot and cart traffic
- 25% more wiping area
- Smooth surface for less wheel bump
- Surface & recessed applications



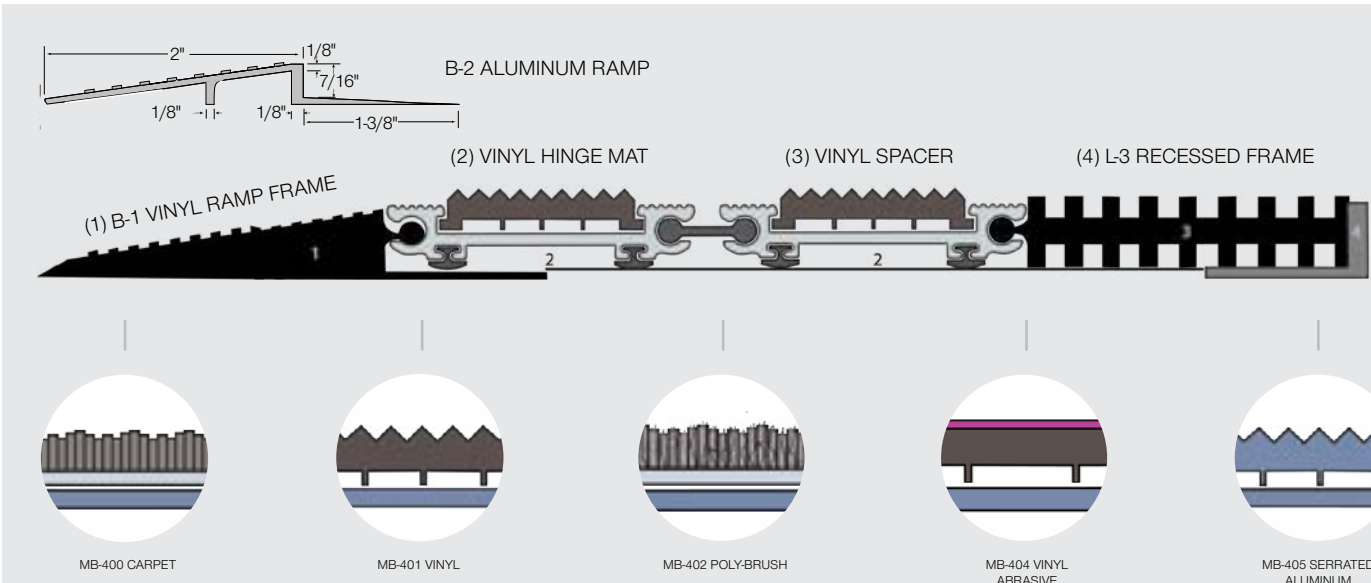
Recessed application requires use of an aluminum frame as illustrated above. The frame helps create a clean installation with well-defined edges and corners. A solid 1/8" thick vinyl "T" profile footer runs the full width and length of each section and provides a low-impact cushion for all traffic



# BaseMat MB-400

A vinyl-hinged framework featuring cushioned supports underneath each rail segment

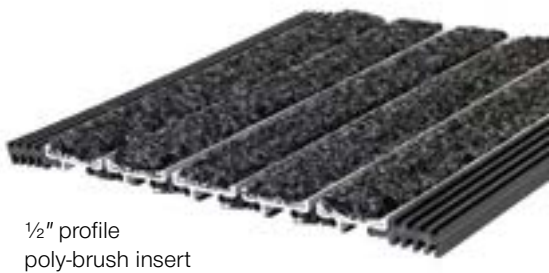
- Easy to roll up for under tread cleaning
- Indoor and outdoor use
- Vinyl hinge lessens walking noise
- Surface & recessed applications



- (1) tapered 2" x 3/8" vinyl ramp-spacer for surface applications
- (2) vinyl hinge mat 2" on centres
- (3) 2" x 3/8" spacer for recess applications and
- (4) 1" x 7/16" aluminum frame for recess applications

Both vinyl spacers are available with and without under-mat tongues (illustrated on tapered ramp-spacer 1)  
A 2" x 7/16" aluminum ramp is available in place of vinyl ramp-spacer

LEED	v4 MR p2, v4 MR c1, v4 MR c3, v4 EQ c1
construction	6063-T6 Aluminum with various insert options
traffic rating	Medium to Heavy Traffic
load rating	750 lb per Wheel
thickness	1/2" (12.7 mm)
additional specs	Weather resistant vinyl hinges
warranty	2 year
recycled content: 38% pre-consumer	



LEED	v4 MR p2, v4 MR c1, v4 MR c3, v4 EQ c1
construction	6063-T6 Aluminum with various insert options
traffic rating	Light to Medium Traffic
load rating	350 lb per Wheel
thickness	Mat Only; 3/8" (9.5 mm) Grid and frame (level base); 7/16" (11 mm)
additional specs	Weather resistant vinyl hinges
warranty	2 year
recycled content: 49% pre-consumer	





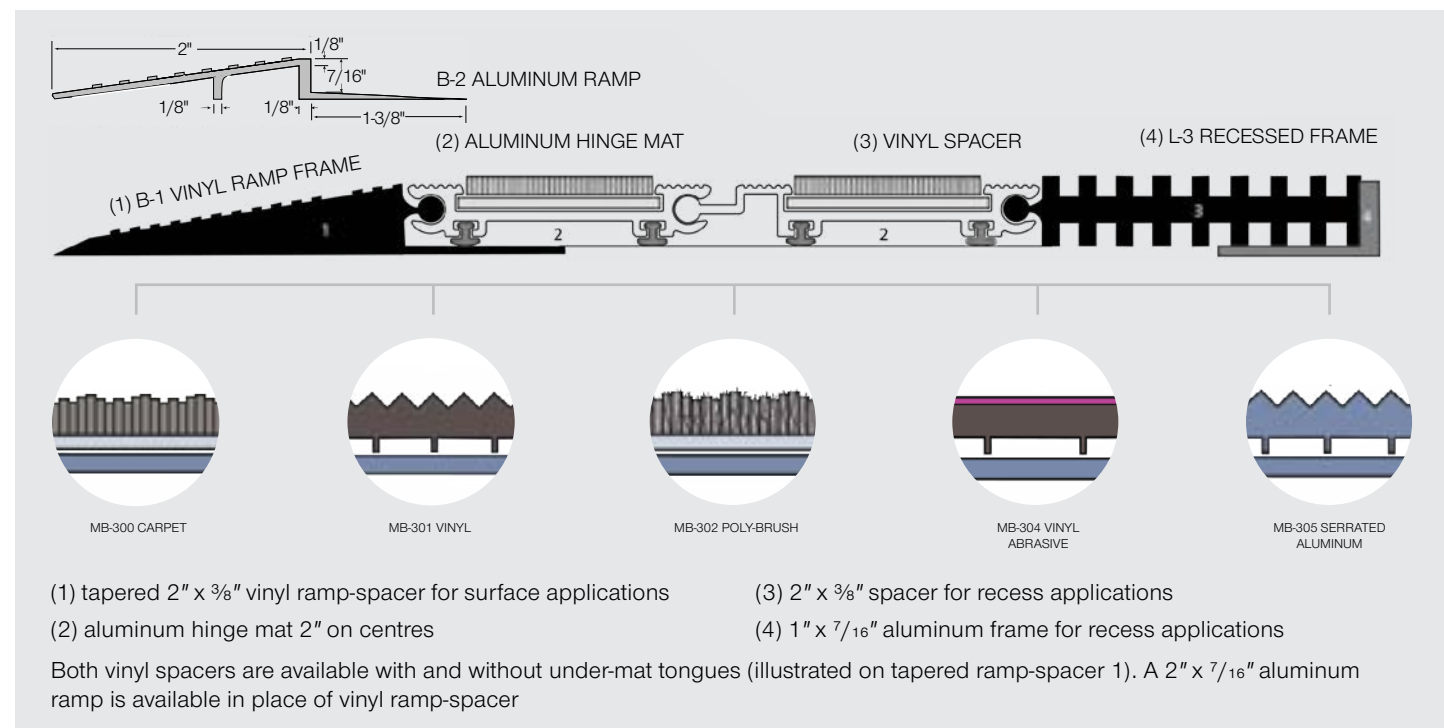


## BaseMat MB-300



**A long-lasting, size-retentive aluminum hinge with cushioned supports at the bottom of each rail segment**

- Easy to roll up for under tread cleaning
- Surface & recessed applications
- Indoor and outdoor use



LEED	v4 MR p2, v4 MR c1, v4 MR c3, v4 EQ c1
construction	6063-T6 Aluminum with various insert options
traffic rating	Light to Medium Traffic
load rating	350 lb per Wheel
thickness	Mat Only; 3/8" (9.5 mm)
	Grid and frame (level base); 7/16" (11 mm)
additional specs	Aluminum hinges
warranty	2 year
recycled content: 49% pre-consumer	



## BaseTray 1000



**Base mat tray helps keep soils contained and out of your building**

- Makes clean up simple
- Easy surface application
- Tray has flexible vinyl ramp with rubber bottom

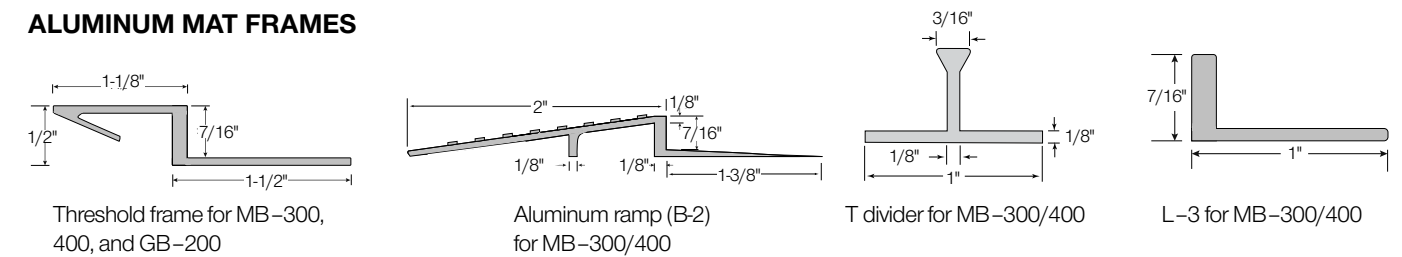


construction	Up to 60% recycled vinyl beveled edge plane; 100% recycled rubber tray
traffic rating	Light to Medium Traffic
thickness	7/16"
warranty	2 year
recycled content: 49% pre-consumer	

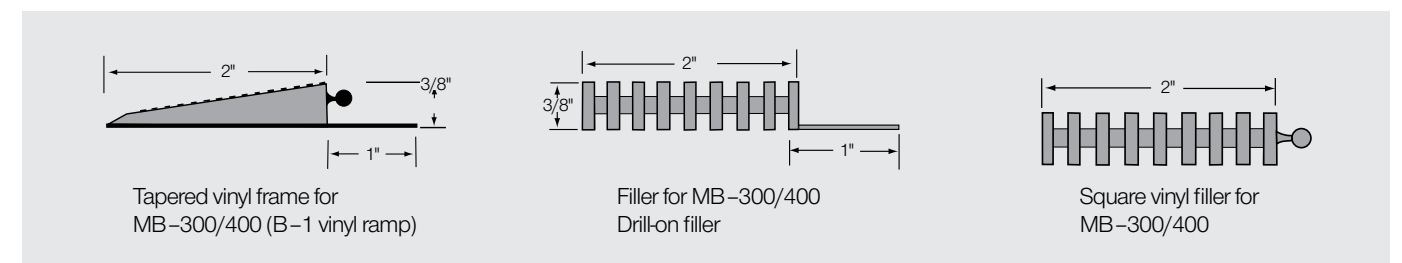
size
2' (0.6 m) x 3' (0.9 m)
3' (0.9 m) x 4' (1.2 m)
4' (1.2 m) x 6' (1.8 m)
(Custom sizes available)

## Base Series Frame Options

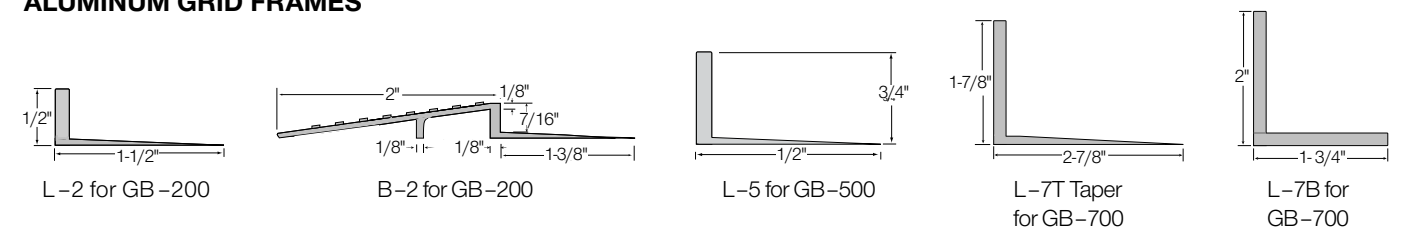
### ALUMINUM MAT FRAMES



### VINYL MAT FRAMES



### ALUMINUM GRID FRAMES






Base Insert Options

				
POLYBRUSH - CHARCOAL	POLYBRUSH - CHOCOLATE	POLYBRUSH - GREY	HD CARPET - CAST IRON	HD CARPET - ONYX
				
HD CARPET - SHADOW	HD CARPET - BLACK IRON	HD CARPET - CHARCOAL	HD CARPET - GREY CASTLE	HD CARPET - DENIM
				
HD CARPET - FERNWOOD	HD CARPET - ESPRESSO	HD CARPET - JAVA	HD CARPET - SILVERMINE	HD CARPET - SPICE
				
HD CARPET - SUEDE	VINYL - BLACK	VINYL - BROWN	VINYL - GREY	SERRATED ALUMINUM
				
VINYL ABRASIVE - BLACK	VINYL ABRASIVE - BRICK RED	VINYL ABRASIVE - DARK BROWN	VINYL ABRASIVE - GREY	

Aluminum Finish Options

					
STANDARD MILL	CLEAR	LIGHT BRONZE	MEDIUM BRONZE	DARK BRONZE	BLACK

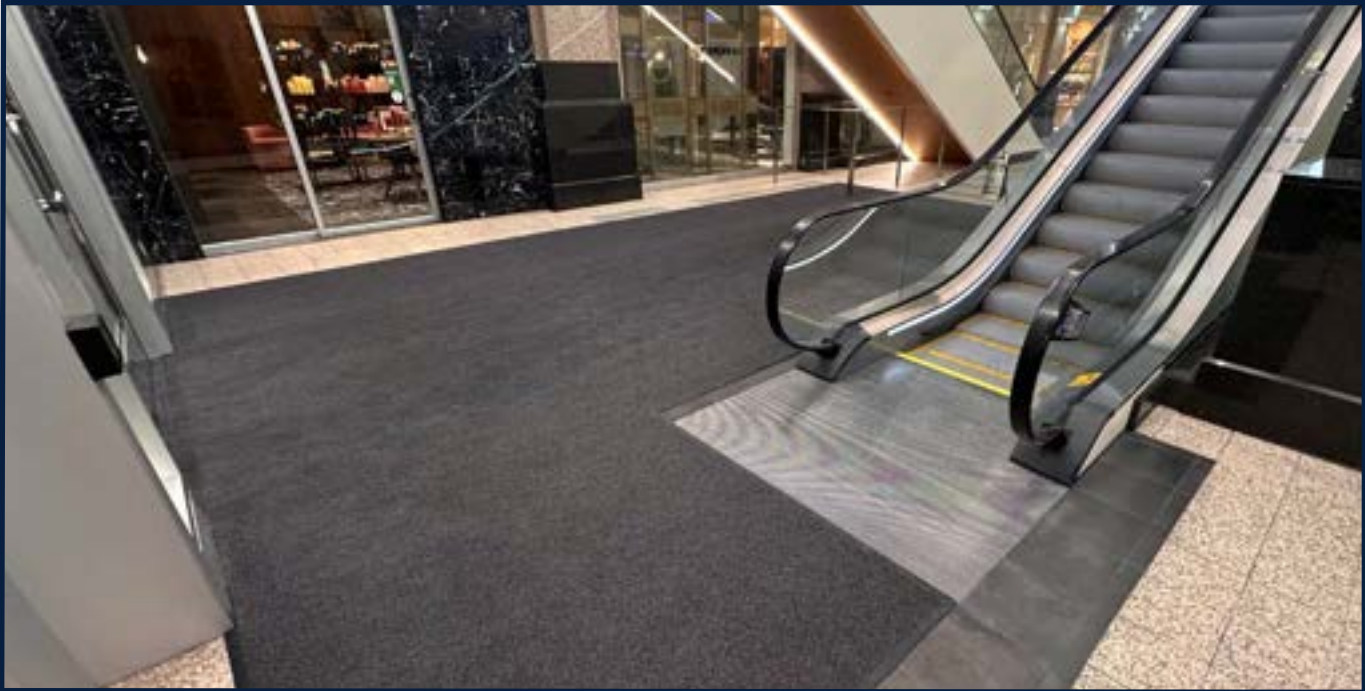
Swatches are CMYK representations only and are not for colour matching purposes

heavy traffic

Highly durable, these mats are aggressive at removing debris

Designed for high traffic entryways that see between 400,000 – 1 million users per year, these matting solutions are recommended for hospitals, shopping centres, grocery stores, schools, office towers and civic buildings





Purcell™

DANCE OFF  
DIRT.  
- CERTIFIED -

THE ULTIMATE PERFORMANCE WITH  
THE LOOK OF QUIET SOPHISTICATION

APPLICATION

Indoor  
Heavy traffic  
Ramp edges, logos, seaming and borders available

COMPOSITION

Permanently anti-static  
Enhanced UV stability  
Mold and mildew resistant  
Ice melt, salt, chlorine and petroleum resistant

construction	Tufted loop pile
face style	Tufted
face material	Polyamide (PA6)
face weight	1,000 g/sq. m (29 oz/sq. yd)
backing	PVC
edging	Available
flammability	Cfl, s1 EN 13501-1
thickness	5/16" (7.2 mm)
total weight	2.97 kg/sq. yd (0.73 lb/sq. ft)
warranty	4 year



#10 CHOCOLATE

#15 BEIGE

#20 CHARCOAL

#22 BLACK

#27 DARK GREY

size	part code
3'4' (1 m) Roll/cut	PRLCC1000
6.5' (2 m) Roll/cut	PRLCC2000
*Roll lengths 82.0' (25 m) +/- (Custom sizes & rolls available) CC = Colour number	



Everest™

DANCE OFF  
DIRT.  
- CERTIFIED -

eco  
FRIENDLY  
RECYCLED CONTENT

COMMERCIAL CARPET AESTHETIC IN AN  
EASY TO CLEAN HIGH TRAFFIC ENTRANCE MATTING

APPLICATION

Indoor/outdoor  
Heavy traffic  
Spike and skate resistant  
Holds ~7 L (1.85 gal) of water per sq. yd  
Ramp edges, logos, seaming and borders available

COMPOSITION

Permanently anti-static  
Enhanced UV stability  
Mold and mildew resistant  
Dimensionally stable backing  
Ice melt, salt, chlorine and petroleum resistant

construction	Needlepunch loop pile
face style	Omni punch patterned needle felt
face material	Solution dyed UV stabilized ASOTA® polypropylene fibres
face weight	1,700 g/sq. m (50 oz/sq. yd)
backing	EM natural-synthetic composite rubber
edging	Available
flammability	Passes C.G.S.B. Standards for Flammability (Pill Test) Meets Flammability Standard DOC-FF-1-70 (Pill Test)
thickness	1/2" (12.5 mm)
total weight	2.82 kg/sq. yd (0.58 lb/sq. ft)
warranty	5 year
recycled content: 5%	



#15 BEIGE

#19 BRONZE

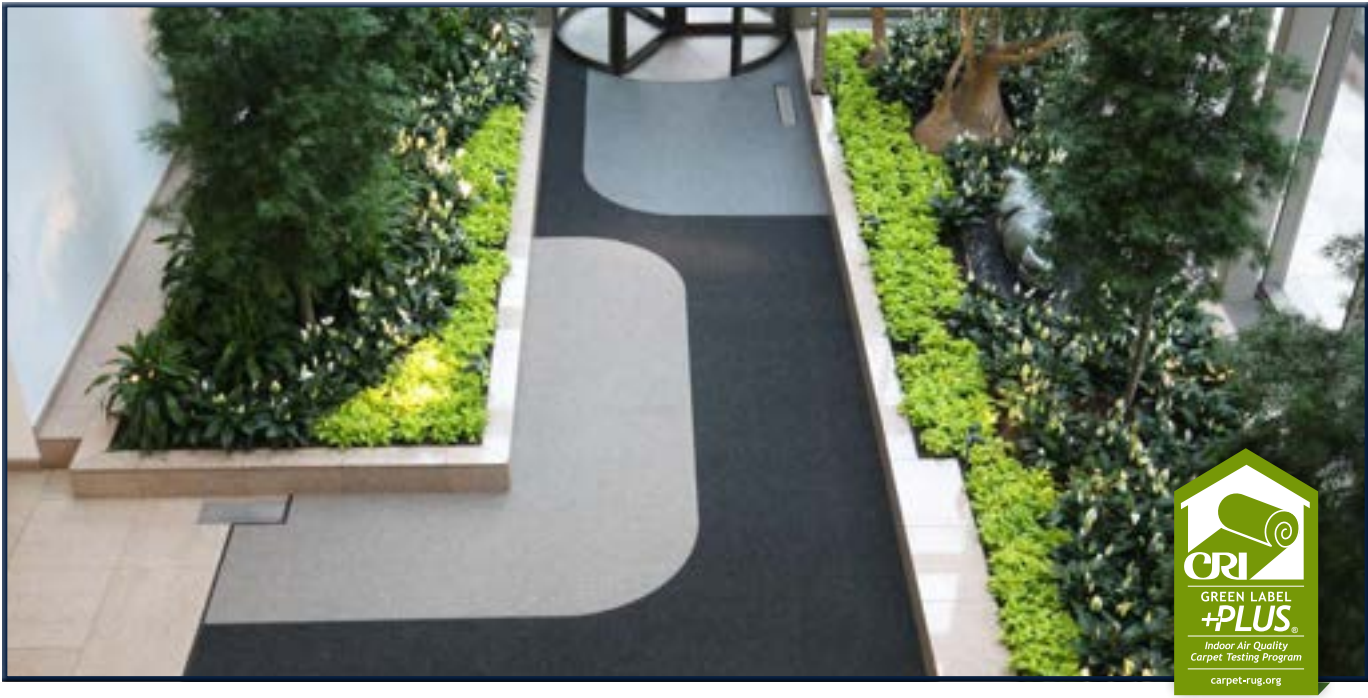
#20 CHARCOAL

#27 DARK GREY

size	part code
3.25' (1 m) Roll/cut	EVRCC1000
6.5' (2 m) Roll/cut	EVRCC2000
13' (4 m) Roll/cut	EVRCC4000
*Roll lengths 75.5' (23 m) +/- (Custom sizes & rolls available) CC = Colour number	

Tile option • See tile section





## Supreme Knob™



ULTIMATE PERFORMANCE WITH WEAR RESISTANT TEXTURE,  
FOR A LONG-LASTING APPEARANCE

**APPLICATION**

- Indoor/outdoor
- Heavy traffic
- Spike and skate resistant
- Holds ~7 L (1.85 gal) of water per sq. yd
- Ramp edges, logos, seaming and borders available

**COMPOSITION**

- Permanently anti-static
- Enhanced UV stability
- Mold and mildew resistant
- Dimensionally stable backing
- Ice melt, salt, chlorine and petroleum resistant

construction	Needlepunch loop pile
face style	Berber (hobnail)
face material	Solution dyed UV stabilized ASOTA® polypropylene fibres
face weight	1,790 g/sq. m (53 oz/sq. yd)
backing	EM natural-synthetic composite rubber
edging	Available
flammability	Passes C.G.S.B. Standards for Flammability (Pill Test) Meets Flammability Standard DOC-FF-1-70 (Pill Test)
thickness	7/16" (11 mm)
total weight	2.91 kg/sq. m (0.60 lb/sq. ft)
warranty	3 year
recycled content: 5%	



size	part code
3.25' (1 m) Roll*/cut	SKNCC1000
6.5' (2 m) Roll*/cut	SKNCC2000
13' (4 m) Roll*/cut	SKNCC4000
*Roll lengths 75.5' (23 m) +/- (Custom sizes & rolls available)	
CC = Colour number	



# logos that last

## GIVE A GREAT FIRST IMPRESSION AND BOOST BRAND VISIBILITY

Inlay logos are made by precision cutting different coloured mats, giving you **a high-clarity logo that never wears off**

- Inlay logos in:
- Purcell™
  - Everest™
  - Supreme Knob™
  - Premium Knob™
  - Rainier™
  - Tundra™







Tundra™



AGGRESSIVE EXTERIOR MAT WITH  
FLOW-THROUGH BACKING TO PROMOTE DRAINAGE

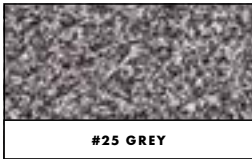
APPLICATION	Outdoor
	Heavy traffic
	Low rolling resistance for wheelchairs
	Ramp edges, logos, seaming and borders available
COMPOSITION	Permanently anti-static
	Enhanced UV stability
	Mold and mildew resistant
	Dimensionally stable backing
	Ice melt, salt, chlorine and petroleum resistant



#10 CHOCOLATE



#20 CHARCOAL



#25 GREY

construction	Tufted cut pile
face style	Tufted grass
face material	Polypropylene
face weight	1,100 g/m <sup>2</sup> (32 oz/yd <sup>2</sup> )
backing	Latex
edging	Available
flammability	Efl, EN 13501-1
thickness	½" (12.5 mm)
total weight	2.32 kg/m <sup>2</sup> (0.48 lb/ft <sup>2</sup> )
warranty	3 year

size	part code
3.25' (1 m) Roll */cut	TRFCC1000
6.5' (2 m) Roll */cut	TRFCC2000
*Roll lengths 65.5' (20 m) +/-	
CC = Colour number	

# heavy traffic tiles

Aggressive at removing debris, tiles make for manageable installation and quick replacement as needed

Everest™ Tile



THE LOOK OF COMMERCIAL CARPET  
IN EASY TO CLEAN, MODULAR NEEDLEFELT MATTING

APPLICATION	Indoor/outdoor
	Heavy traffic
	Spike and skate resistant
	Ramp edges, logos, seaming and borders available
COMPOSITION	Permanently anti-static
	Enhanced UV stability
	Mold and mildew resistant
	Dimensionally stable backing
	Ice melt, salt, chlorine and petroleum resistant



construction	Needlepunch loop pile
face style	Omni punch patterned needle felt
face material	Solution dyed UV stabilized ASOTA® polypropylene fibres
backing	Bitumen
thickness	9/16" (14.5 mm)
total weight	5.05 kg/sq. m (1.04 lb/sq. ft)
warranty	5 year



#20 CHARCOAL

size	part code
0.5 m x 0.5 m (1' 7" x 1' 7")	EVTCC5050
CC = Colour number	





## Supreme Knob™ Tile



MODULAR HIGH CAPACITY MATTING WITH WEAR  
RESISTANT TEXTURE, FOR A LONG LASTING APPEARANCE

APPLICATION	Indoor/outdoor
	Heavy traffic
	Spike and skate resistant
	Holds ~7 L (1.85 gal) of water per sq. yd
COMPOSITION	Ramp edges, logos, seaming and borders available
	Permanently anti-static
	Enhanced UV stability
	Mold and mildew resistant
	Dimensionally stable backing
	Ice melt, salt, chlorine and petroleum resistant

construction	Needlepunch loop pile
face style	Berber (hobnail)
face material	Solution dyed UV stabilized ASOTA® polypropylene fibres
backing	Bitumen
thickness	9/16" (14.5 mm)
total weight	5.05 kg/sq. m (1.04 lb/sq. ft)
warranty	3 year



size	part code
0.5 m x 0.5 m (1' 7" x 1' 7")	SNDCC5050
CC = Colour number Sold in full cases only (12 per case)	

## Supreme Diagonal Tile



HIGH SOIL CAPACITY AND CRUSH-RESISTANT NEEDLEFELT  
MODULAR DESIGN; IDEAL FOR CART TRAFFIC

APPLICATION	Indoor/outdoor
	Heavy traffic
	Spike and skate resistant
	Holds ~7 L (1.85 gal) of water per sq. yd
COMPOSITION	Ramp edges, logos, seaming and borders available
	Enhanced UV stability
	Mold and mildew resistant
	Dimensionally stable backing
	Ice melt, salt, chlorine and petroleum resistant

construction	Needlepunch loop pile
face style	Ribbed
face material	Solution dyed UV stabilized ASOTA® polypropylene fibres
backing	Bitumen
thickness	9/16" (14.5 mm)
total weight	5.05 kg/sq. m (1.04 lb/sq. ft)
warranty	3 year



size	part code
0.5 m x 0.5 m (1' 7" x 1' 7")	SDTCC5050
Sold in full cases only (12 per case)	
CC = Colour number	

## Chaparral™ Tile

EASY CLEANING DUAL FIBRE CONSTRUCTION

APPLICATION	Medium traffic wiper/scrapper matting
	Excellent slip-resistant surface
	Cut pile for moisture collection
	Blended colours complement almost any décor

face construction	Tufted
face style	Level cut pile
face material	Polyamide (PA6)
face weight	830 g/sq. m (24 oz/sq. yd)
backing	Bitumen
edging	Available
thickness	5/16' (8.0 mm)
total weight	3.91 kg/sq. m (0.80 lb/sq. ft)
warranty	1 year



size	part code
0.5 m x 0.5 m (1' 7" x 1' 7")	CPLCC5050
CC = Colour number	





**[inquiries@edgewoodgroup.ca](mailto:inquiries@edgewoodgroup.ca)**  
**1.800.668.1776**

**service hub**

18120 109 Ave. NW Edmonton, AB T5S 2K2  
T : 780.466.2084 F : 780.468.9104

The descriptions in this catalogue are based on information provided and to our knowledge are accurate at the time of printing. There may be some minor variations between the images and the products sold. Specifications subject to change without notice. Errors and omissions excepted. V20625

