

debris trap™ tile

HEAVY TRAFFIC ENTRANCE SYSTEM

INDOOR SCRAPER

Debris Trap™ Tile is a highly durable, high quality product designed to allow dirt and moisture to fall below the traffic level. Its modular design is easy to assemble, customize and is cost effective.

PERFECT FOR

VESTIBULES
RECESSED WELLS
HEAVY TRAFFIC ENTRANCES

widths

11 5/8 in. (0.30 m.)

lengths

17 5/8 in. (0.30 m.)

face style

Tufted brush

edging

Available

total weight

1.18 kg. (2.60 lb.)

thickness

1/2 in. (12.5 mm.)

colour(s)

2 available

warranty

3 year



edmonton
vancouver
toronto
edgewoodgroup.ca

November 29, 2021

CALL FOR DETAILS OR TO REQUEST A SAMPLE

1.800.668.1776

P 780.466.2084 • F 780.468.9104
E inquiries@edgewoodgroup.ca

debris trap™ tile

construction

Vinyl grid

chemical

Non-porous PVC with Nitride rubber blend inhibits the growth of bacteria.
Resistant to most acids, alkaline and oils.

slip resistance

DIN 51130, R13 Classification

static load

3000 kgf

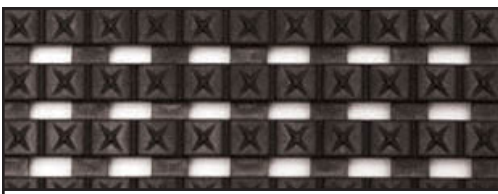
flammability

UL 94, V0

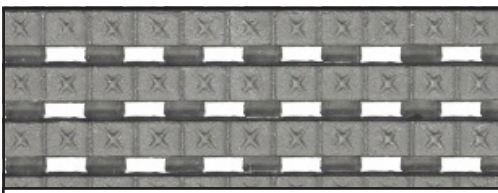
recycled content

30%

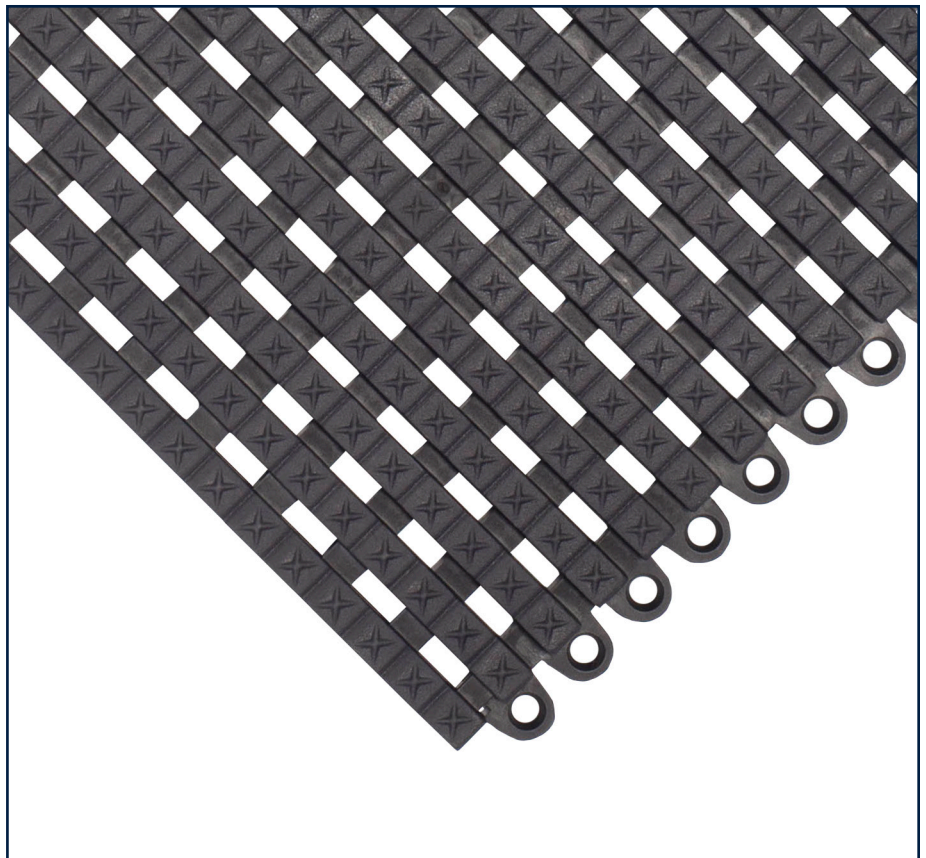
SWATCHES



#22 BLACK



#25 GREY



edmonton
vancouver
toronto
edgewoodgroup.ca

November 29, 2021

CALL FOR DETAILS OR TO REQUEST A SAMPLE

1.800.668.1776

P 780.466.2084 • F 780.468.9104
E inquiries@edgewoodgroup.ca